



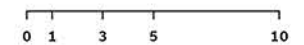
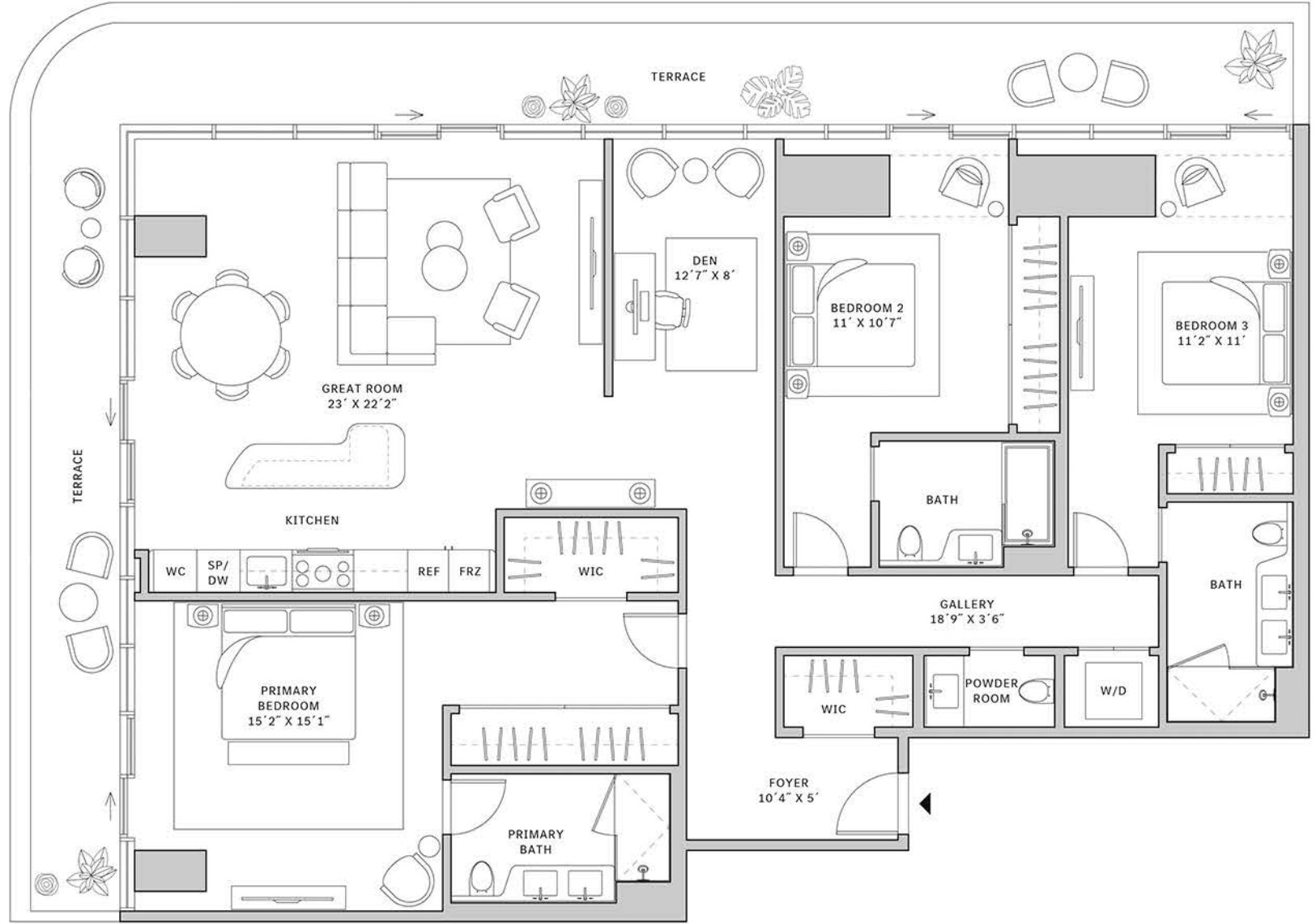
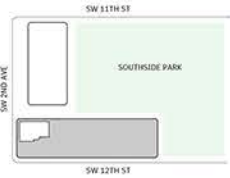
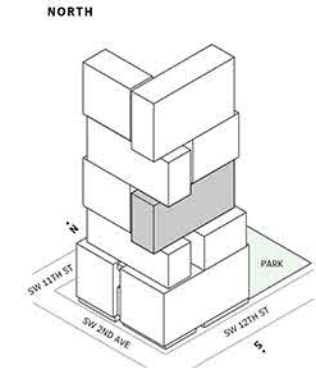
Residence 01

FLOORS 32-40

- ▲ South Tower
- ▲ 3 Bedrooms
- ▲ 3 Bathrooms
- ▲ 1 Den/Office
- ▲ 1 Powder Room
- ▲ Interior: 2,116 sq ft
- ▲ Terrace: 602 sq ft

FEATURES

- ▲ Corner three-bedroom residence with panoramic West to North exposure
- ▲ 10' floor-to-ceiling windows and sliding glass doors with direct access to 5' deep wrap-around terraces





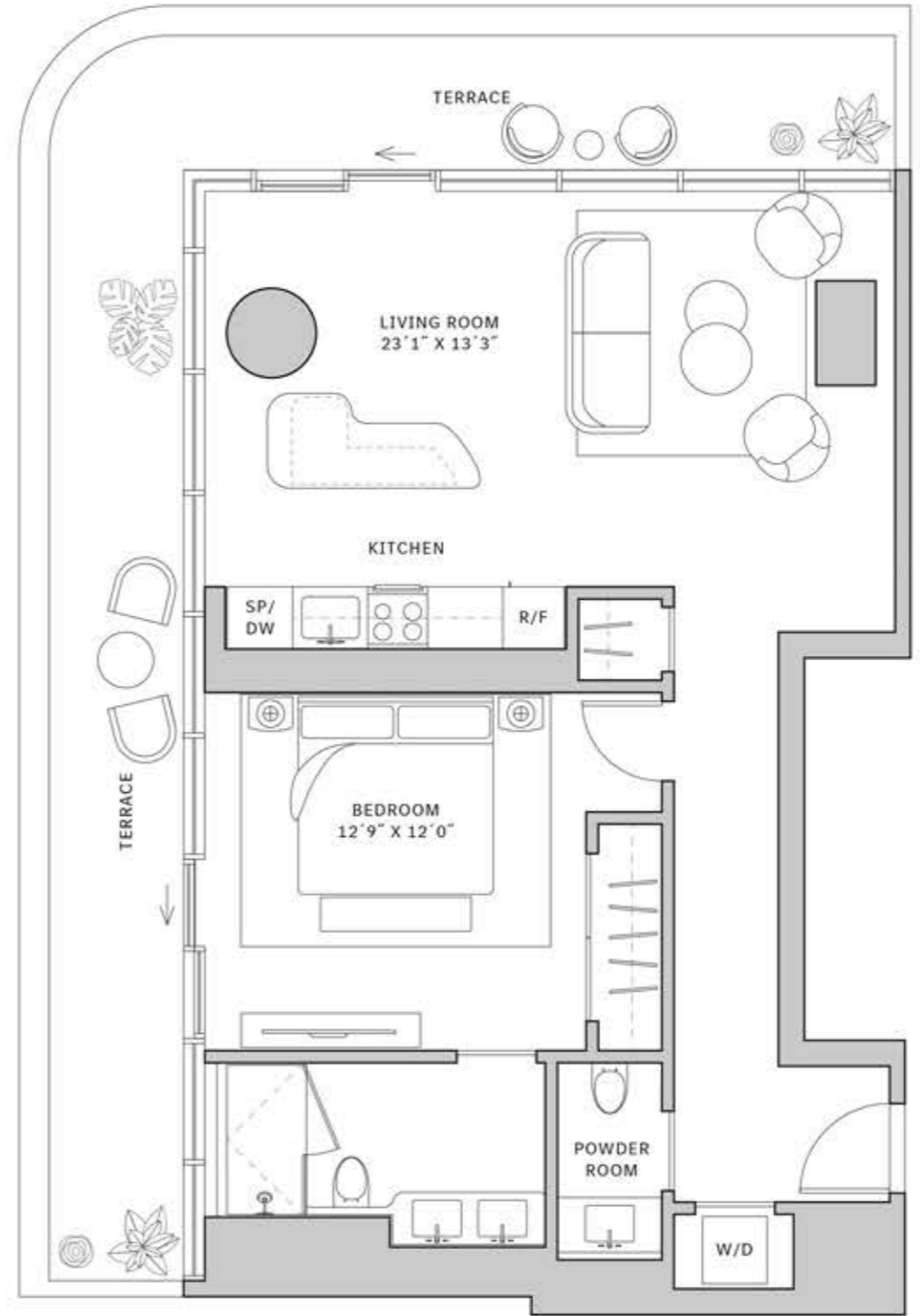
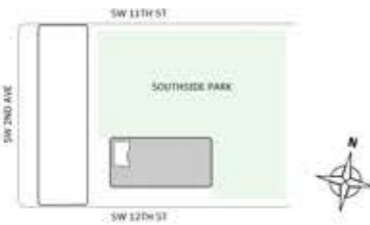
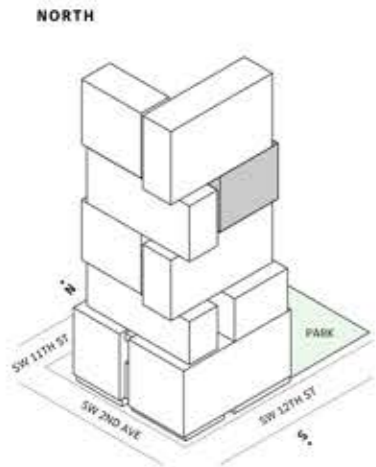
Residence 01

FLOORS 42-51

- ▲ South Tower
- ▲ 1 Bedroom
- ▲ 1 Bathroom
- ▲ 1 Powder Room
- ▲ Interior: 872 sq ft
- ▲ Terrace: 365 sq ft

FEATURES

- ▲ Corner one-bedroom residence with panoramic West to North exposure
- ▲ 10' floor-to-ceiling windows and sliding glass doors with direct access to 5' deep wrap-around terraces



0 1 3 5 10





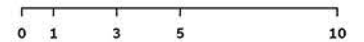
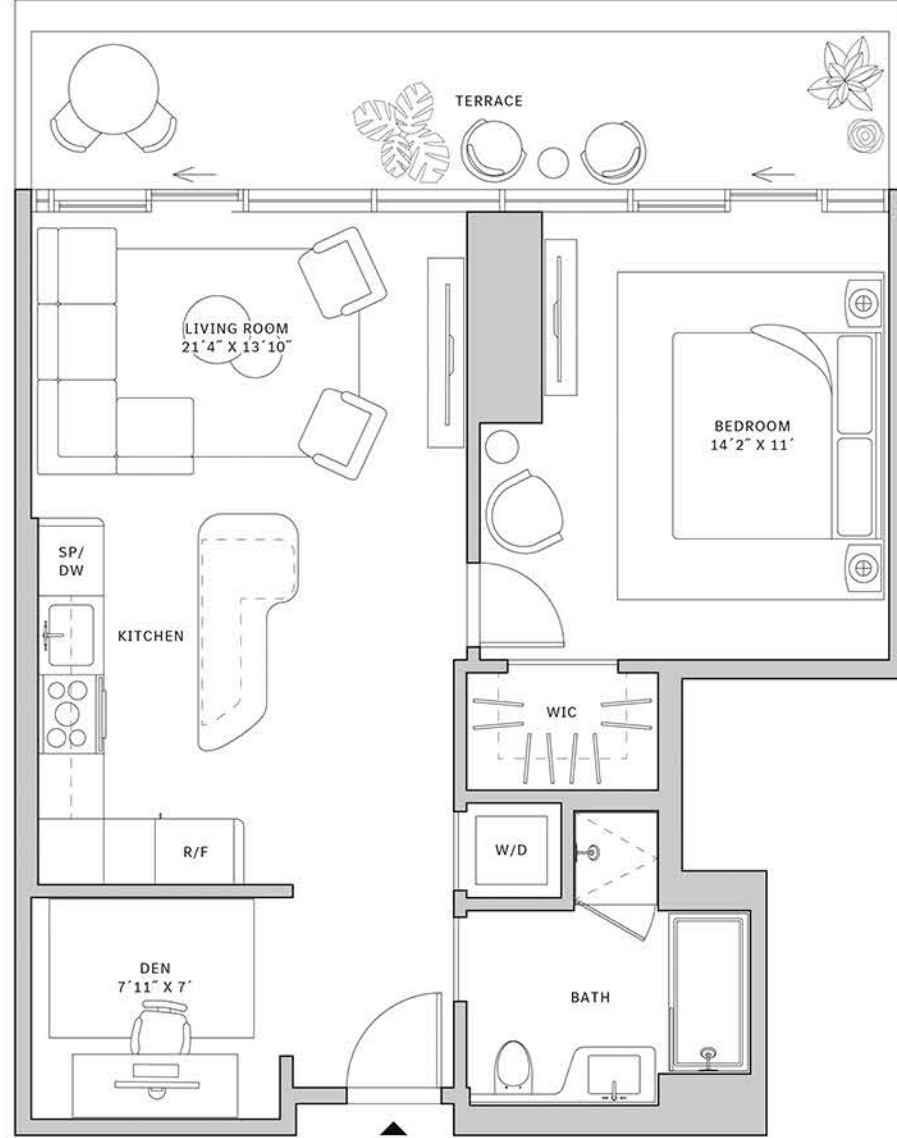
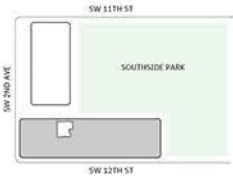
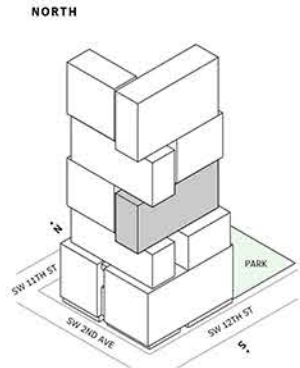
Residence 02

FLOORS 32-40

- ▲ South Tower
- ▲ 1 Bedroom
- ▲ 1 Bathroom
- ▲ 1 Den/Office
- ▲ Private Terrace
- ▲ Interior: 818 sq ft
- ▲ Terrace: 166 sq ft

FEATURES

- ▲ One bedroom residence with North exposure
- ▲ 10' floor-to-ceiling windows and sliding glass doors with direct access to 5' deep terrace





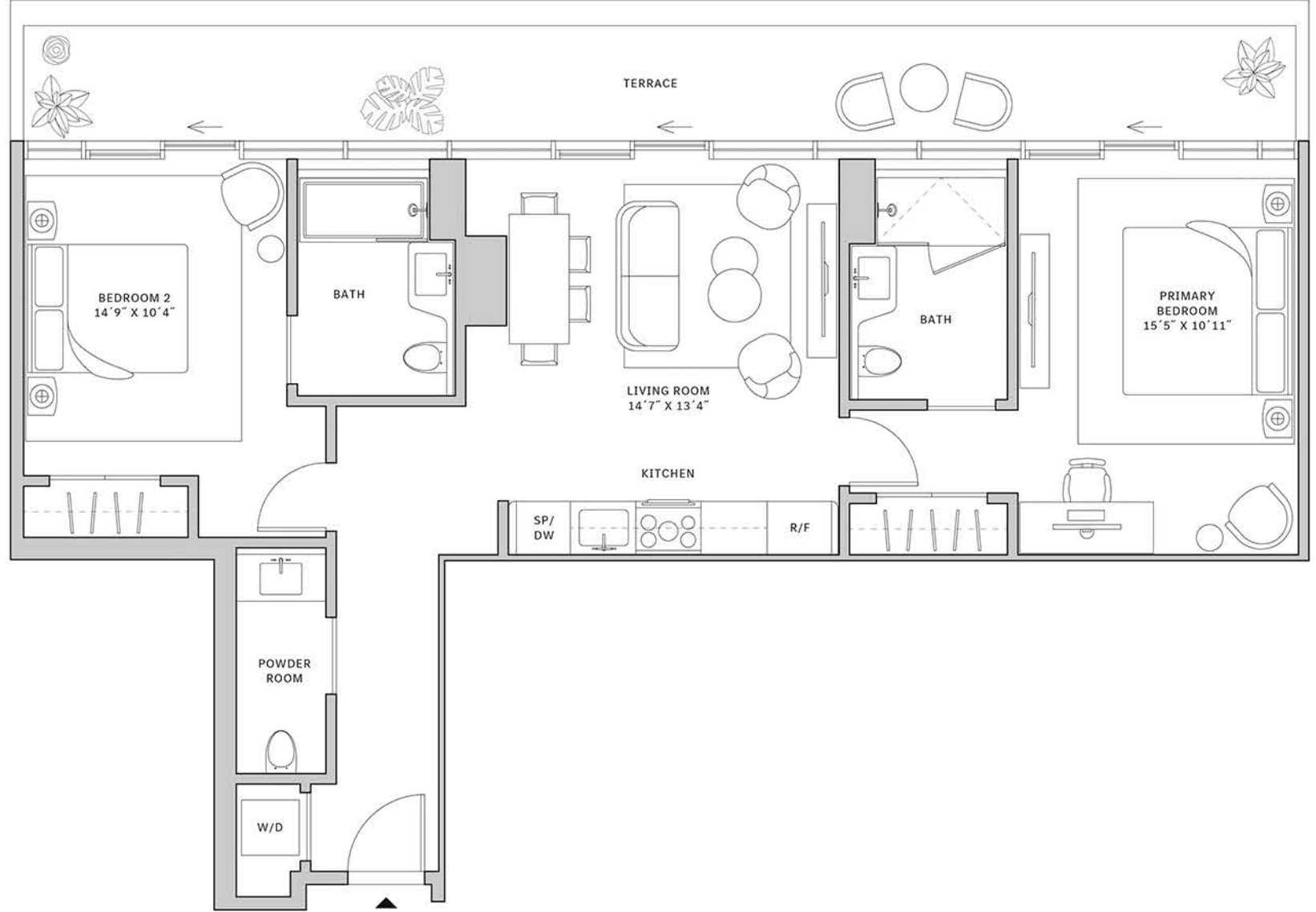
Residence 02

FLOORS 42-51

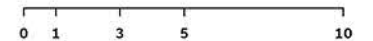
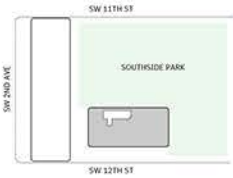
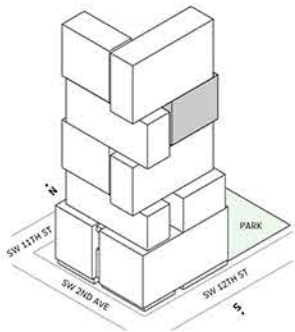
- ▲ South Tower
- ▲ 2 Bedrooms
- ▲ 2 Bathrooms
- ▲ 1 Powder Room
- ▲ Interior: 1,057 sq ft
- ▲ Terrace: 276 sq ft

FEATURES

- ▲ Two bedrooms residence with North exposure
- ▲ 10' floor-to-ceiling windows and sliding glass doors with direct access to 5' deep terraces



NORTH



STATED DIMENSIONS ARE MEASURED TO THE EXTERIOR BOUNDARIES OF THE EXTERIOR WALLS AND THE CENTERLINE OF INTERIOR DEMISING WALLS AND IN FACT VARY FROM THE DIMENSIONS THAT WOULD BE DETERMINED BY USING THE DESCRIPTION AND DEFINITION OF THE "UNIT" SET FORTH IN THE DECLARATION WHICH GENERALLY ONLY INCLUDES THE INTERIOR AIRSPACE BETWEEN THE PERIMETER WALLS AND EXCLUDES INTERIOR STRUCTURAL COMPONENTS). FOR YOUR REFERENCE, THE AREA OF THE UNIT, DETERMINED IN ACCORDANCE WITH THOSE DEFINED UNIT BOUNDARIES, IS SET FORTH IN EXHIBIT 3 TO THE DECLARATION OF THE CONDOMINIUM. NOTE THAT MEASUREMENTS OF ROOMS SET FORTH ON THIS FLOOR PLAN ARE GENERALLY TAKEN AT THE GREATEST POINTS OF EACH GIVEN ROOM (AS IF THE ROOM WERE A PERFECT RECTANGLE), WITHOUT REGARD FOR ANY CUTOUTS. ACCORDINGLY, THE AREA OF THE ACTUAL ROOM WILL USUALLY BE SMALLER THAN THE PRODUCT OBTAINED BY MULTIPLYING THE STATED LENGTH TIMES WIDTH. ALL DIMENSIONS ARE APPROXIMATE AND MAY VARY WITH ACTUAL CONSTRUCTION, AND ALL FLOOR PLANS AND DEVELOPMENT PLANS ARE SUBJECT TO CHANGE.



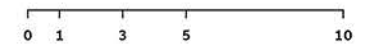
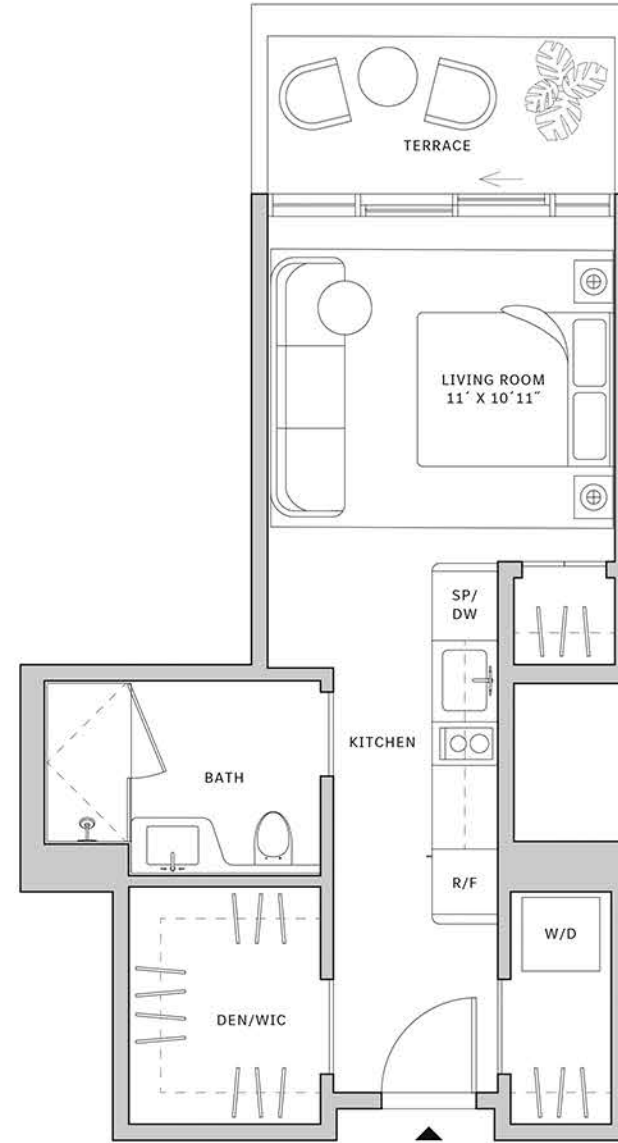
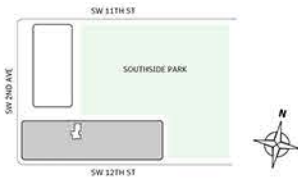
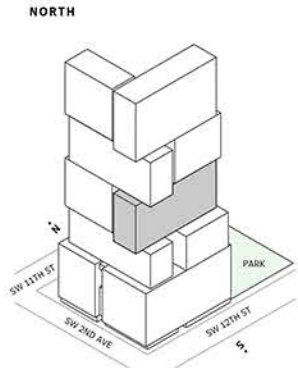
Residence 03

FLOORS 32-40

- ▲ South Tower
- ▲ Studio
- ▲ 1 Bathroom
- ▲ Private Terrace
- ▲ Interior: 403 sq ft
- ▲ Terrace: 63 sq ft

FEATURES

- ▲ Studio residence with North exposure
- ▲ 10' floor-to-ceiling windows and sliding glass doors with direct access to 5' deep terrace





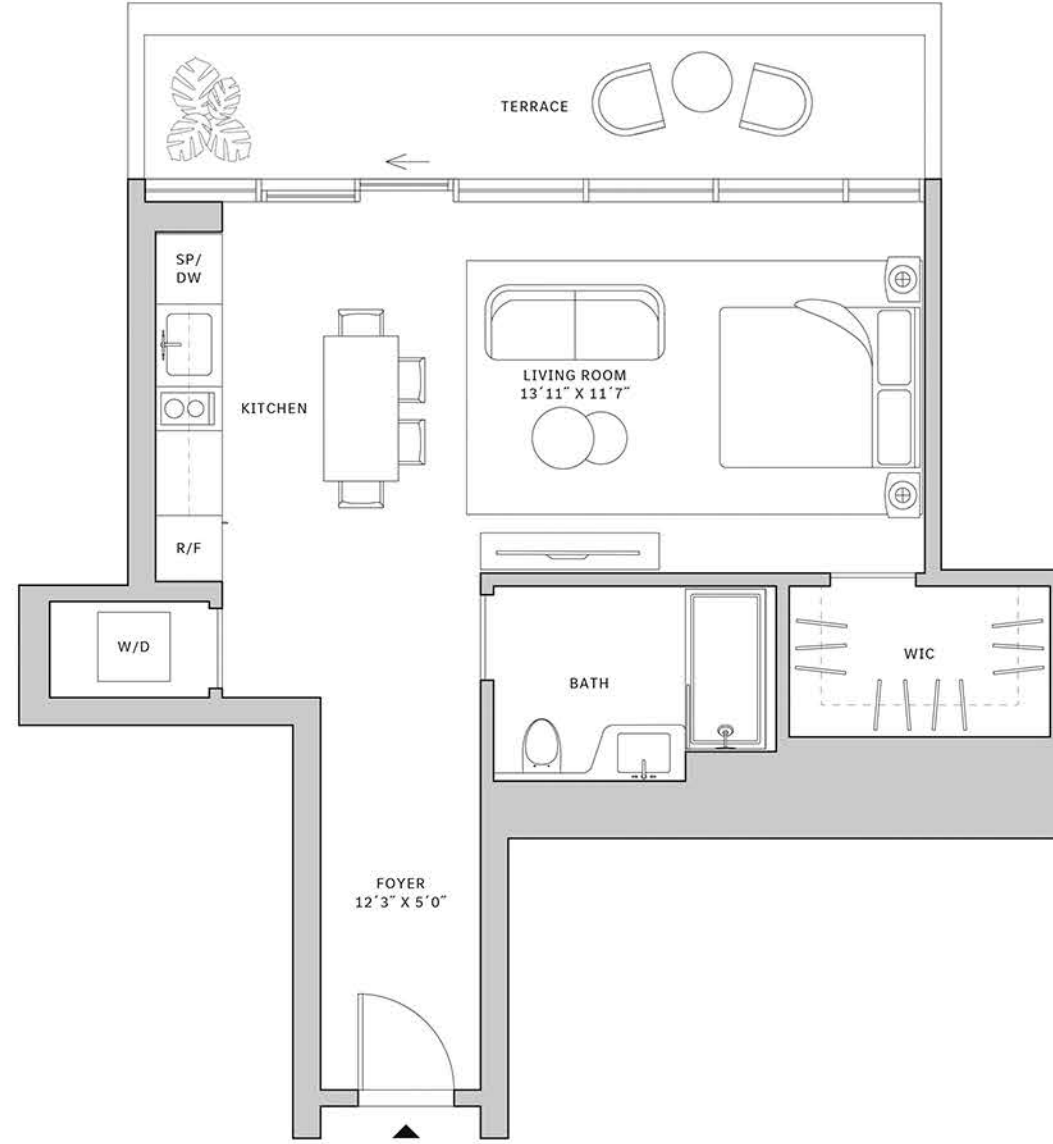
Residence 03

FLOORS 42-51

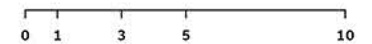
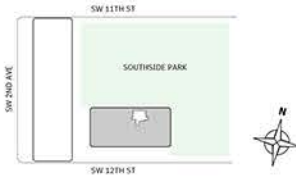
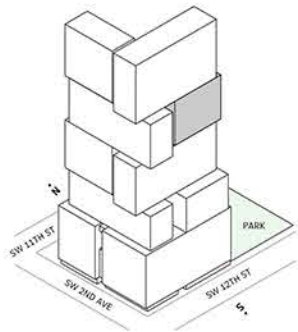
- ▲ South Tower
- ▲ Studio
- ▲ 1 Bathroom
- ▲ Interior: 622 sq ft
- ▲ Terrace: 156 sq ft

FEATURES

- ▲ Studio residence with North exposure
- ▲ 10' floor-to-ceiling windows and sliding glass doors with direct access to 5' deep terraces



NORTH





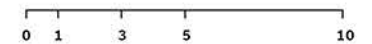
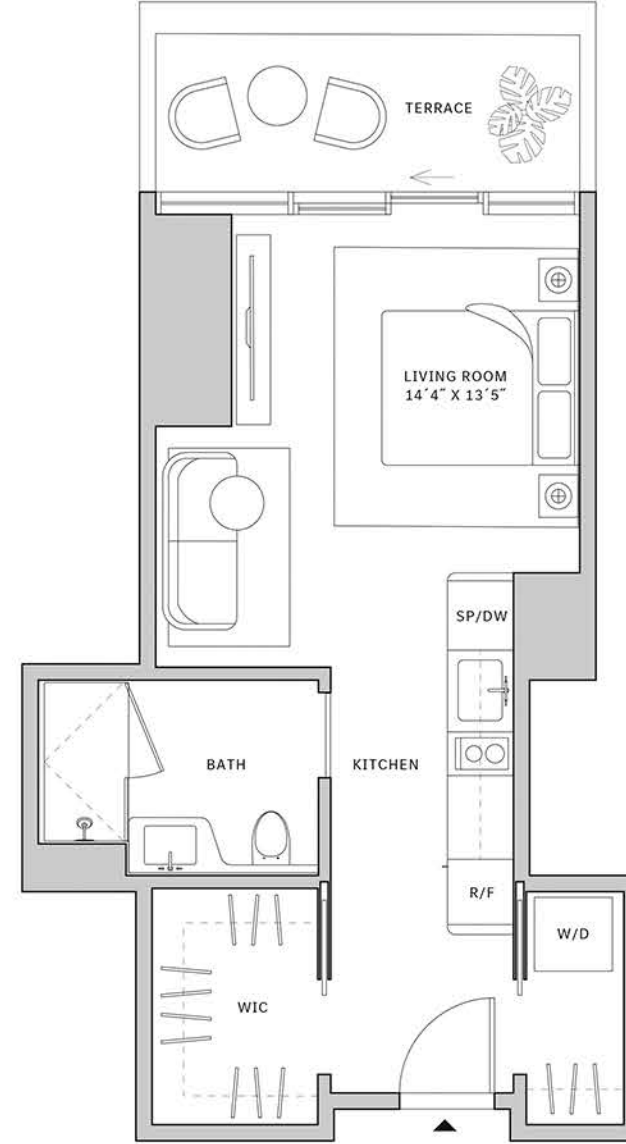
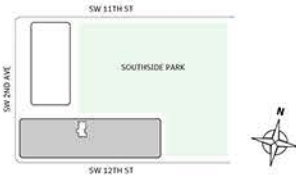
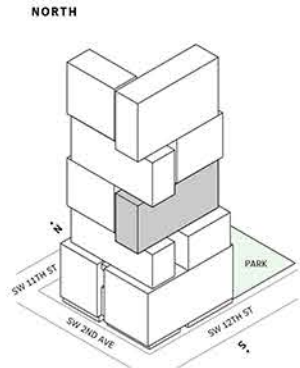
Residence 04

FLOORS 32-40

- ▲ South Tower
- ▲ Studio
- ▲ 1 Bathroom
- ▲ Interior: 440 sq ft
- ▲ Terrace: 76 sq ft

FEATURES

- ▲ Studio residence with North exposure
- ▲ 10' floor-to-ceiling windows and sliding glass doors with direct access to 5' deep terrace





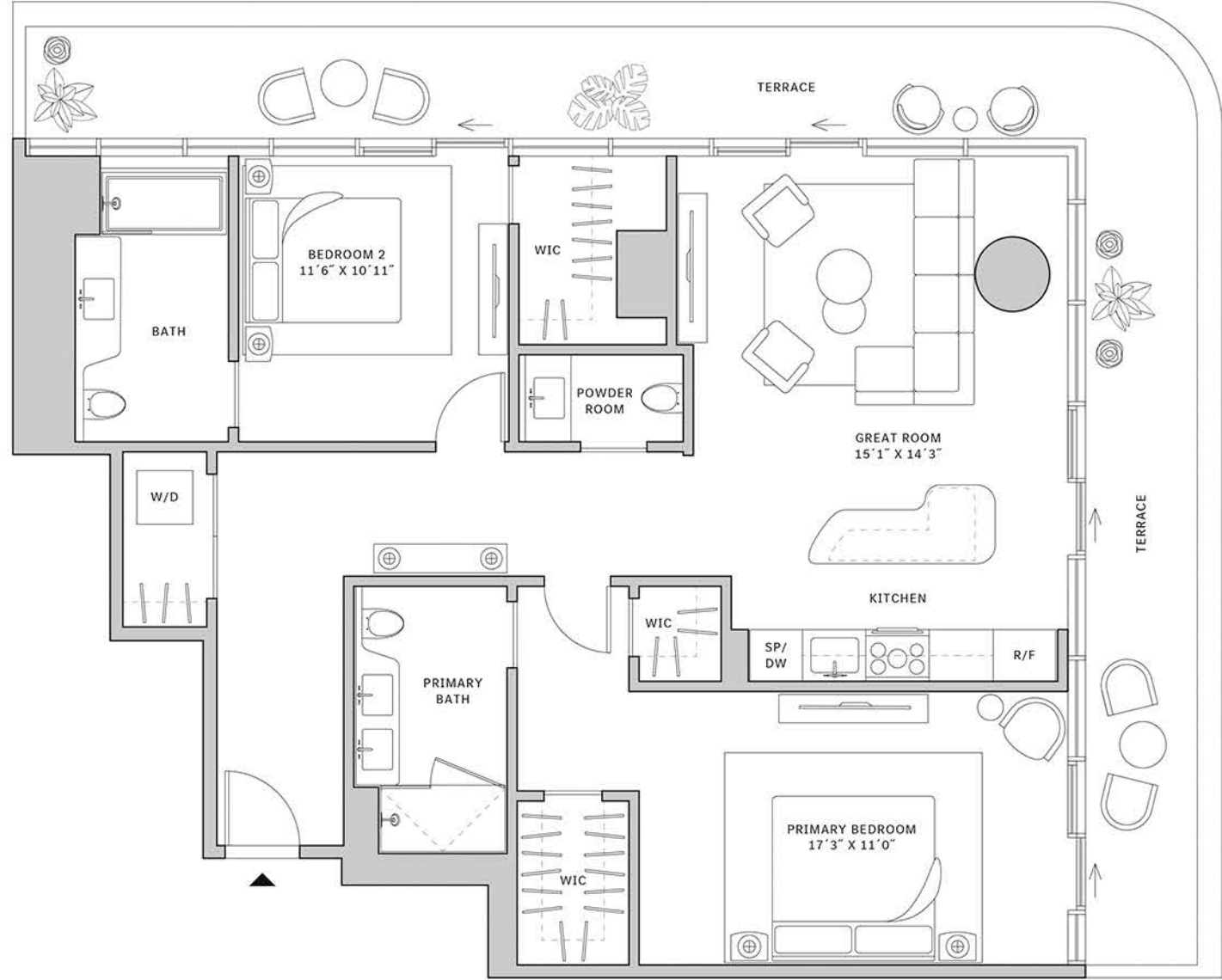
Residence 04

FLOORS 42-51

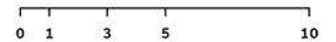
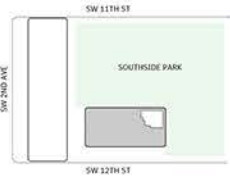
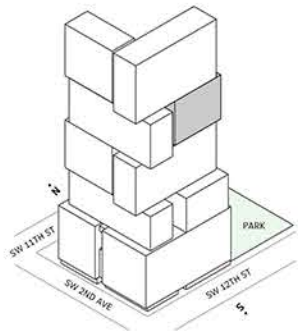
- ▲ South Tower
- ▲ 2 Bedroom
- ▲ 2 Bathroom
- ▲ 1 Powder Room
- ▲ Interior: 1,267 sq ft
- ▲ Terrace: 445 sq ft

FEATURES

- ▲ Corner two-bedroom residence with panoramic East to North exposure
- ▲ 10' floor-to-ceiling windows and sliding glass doors with direct access to 5' deep wrap-around terraces



NORTH



STATED DIMENSIONS ARE MEASURED TO THE EXTERIOR BOUNDARIES OF THE EXTERIOR WALLS AND THE CENTERLINE OF INTERIOR DEMISING WALLS AND IN FACT VARY FROM THE DIMENSIONS THAT WOULD BE DETERMINED BY USING THE DESCRIPTION AND DEFINITION OF THE "UNIT" SET FORTH IN THE DECLARATION WHICH GENERALLY ONLY INCLUDES THE INTERIOR AIRSPACE BETWEEN THE PERIMETER WALLS AND EXCLUDES INTERIOR STRUCTURAL COMPONENTS. FOR YOUR REFERENCE, THE AREA OF THE UNIT, DETERMINED IN ACCORDANCE WITH THOSE DEFINED UNIT BOUNDARIES, IS SET FORTH IN EXHIBIT 3 TO THE DECLARATION OF THE CONDOMINIUM. NOTE THAT MEASUREMENTS OF ROOMS SET FORTH ON THIS FLOOR PLAN ARE GENERALLY TAKEN AT THE GREATEST POINTS OF EACH GIVEN ROOM (AS IF THE ROOM WERE A PERFECT RECTANGLE), WITHOUT REGARD FOR ANY CUTOUTS. ACCORDINGLY, THE AREA OF THE ACTUAL ROOM WILL TYPICALLY BE SMALLER THAN THE PRODUCT OBTAINED BY MULTIPLYING THE STATED LENGTH TIMES WIDTH. ALL DIMENSIONS ARE APPROXIMATE AND MAY VARY WITH ACTUAL CONSTRUCTION, AND ALL FLOOR PLANS AND DEVELOPMENT PLANS ARE SUBJECT TO CHANGE.



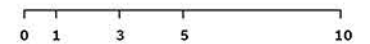
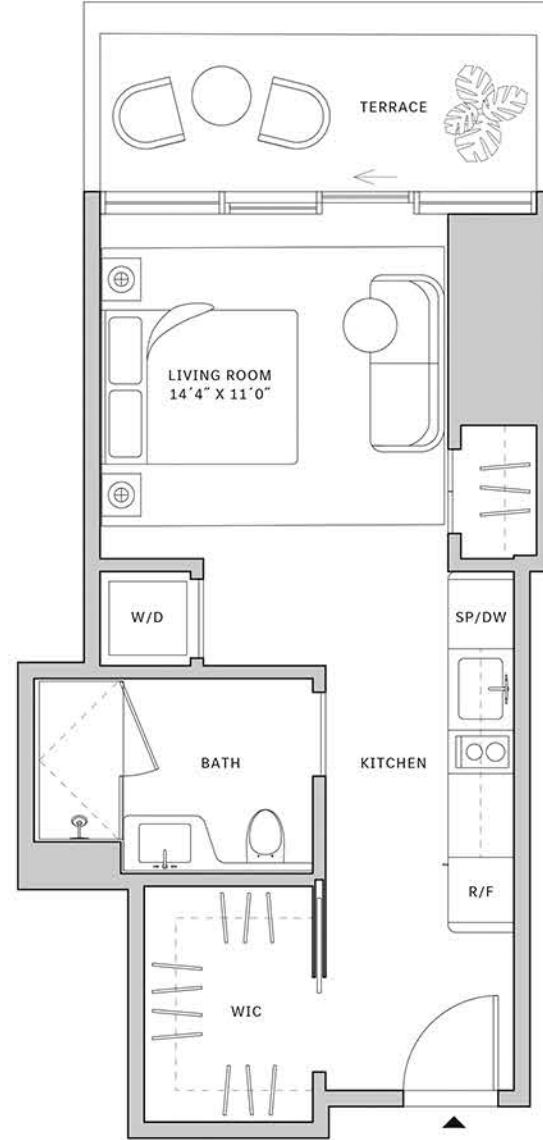
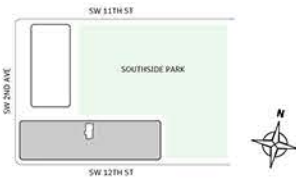
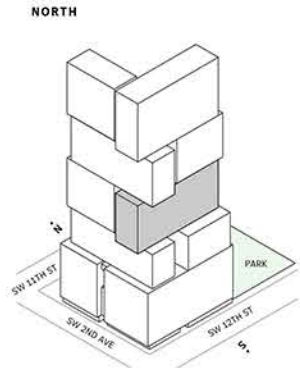
Residence 05

FLOORS 32-40

- ▲ South Tower
- ▲ Studio
- ▲ 1 Bathroom
- ▲ Interior: 419 sq ft
- ▲ Terrace: 79 sq ft

FEATURES

- ▲ Studio residence with North exposure
- ▲ 10' floor-to-ceiling windows and sliding glass doors with direct access to 5' deep terrace





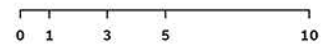
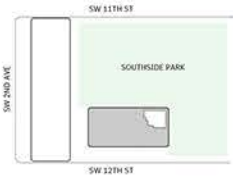
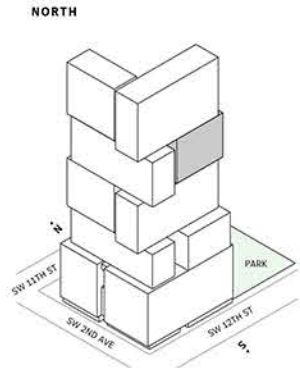
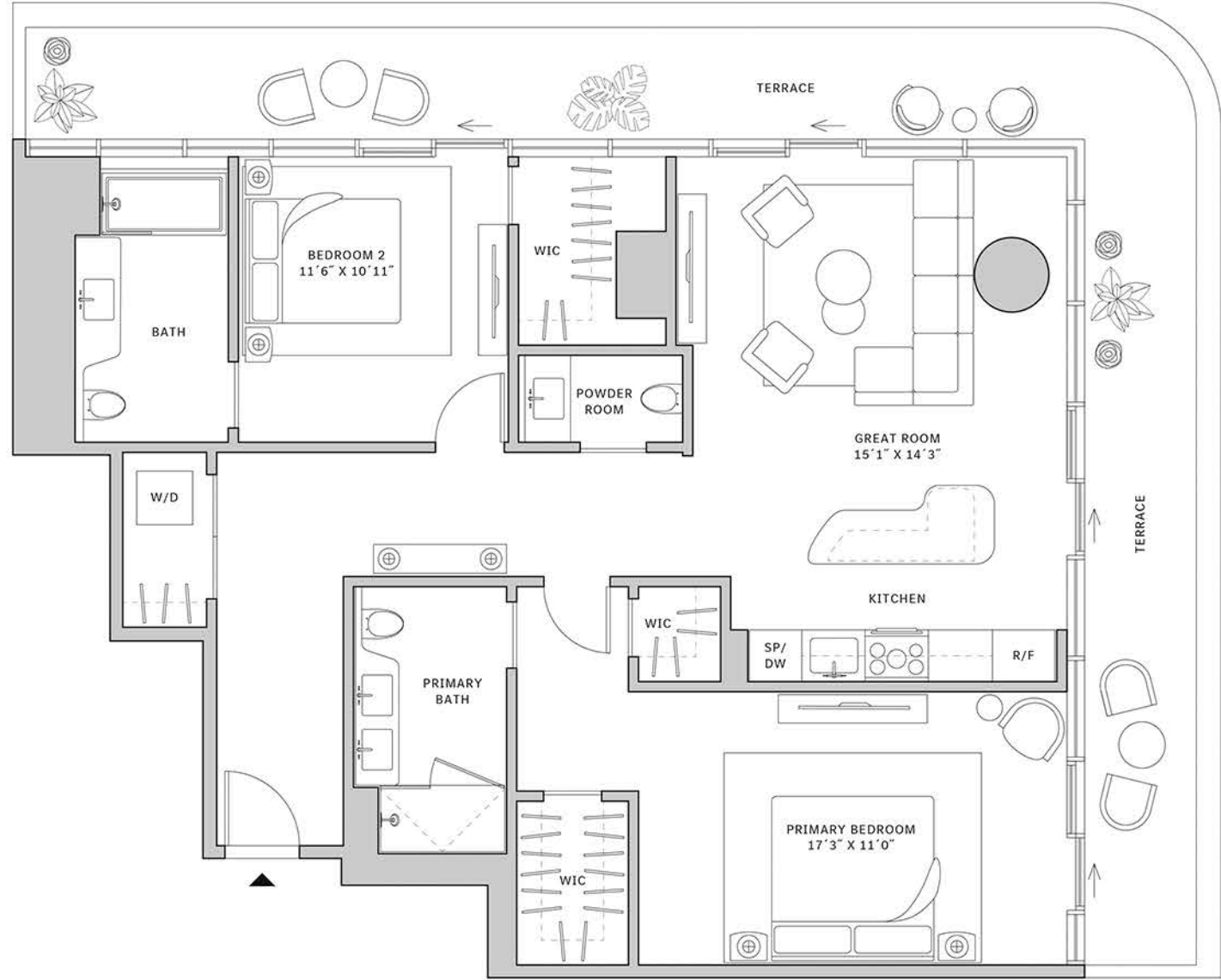
Residence 04

FLOORS 42-51

- ▲ South Tower
- ▲ 2 Bedroom
- ▲ 2 Bathroom
- ▲ 1 Powder Room
- ▲ Interior: 1,267 sq ft
- ▲ Terrace: 445 sq ft

FEATURES

- ▲ Corner two-bedroom residence with panoramic East to North exposure
- ▲ 10' floor-to-ceiling windows and sliding glass doors with direct access to 5' deep wrap-around terraces



STATED DIMENSIONS ARE MEASURED TO THE EXTERIOR BOUNDARIES OF THE EXTERIOR WALLS AND THE CENTERLINE OF INTERIOR DEMISING WALLS AND IN FACT VARY FROM THE DIMENSIONS THAT WOULD BE DETERMINED BY USING THE DESCRIPTION AND DEFINITION OF THE "UNIT" SET FORTH IN THE DECLARATION WHICH GENERALLY ONLY INCLUDES THE INTERIOR AIRSPACE BETWEEN THE PERIMETER WALLS AND EXCLUDES INTERIOR STRUCTURAL COMPONENTS). FOR YOUR REFERENCE, THE AREA OF THE UNIT, DETERMINED IN ACCORDANCE WITH THOSE DEFINED UNIT BOUNDARIES, IS SET FORTH IN EXHIBIT 3 TO THE DECLARATION OF THE CONDOMINIUM. NOTE THAT MEASUREMENTS OF ROOMS SET FORTH ON THIS FLOOR PLAN ARE GENERALLY TAKEN AT THE GREATEST POINTS OF EACH GIVEN ROOM (AS IF THE ROOM WERE A PERFECT RECTANGLE), WITHOUT REGARD FOR ANY CUTOUTS. ACCORDINGLY, THE AREA OF THE ACTUAL ROOM WILL TYPICALLY BE SMALLER THAN THE PRODUCT OBTAINED BY MULTIPLYING THE STATED LENGTH TIMES WIDTH. ALL DIMENSIONS ARE APPROXIMATE AND MAY VARY WITH ACTUAL CONSTRUCTION, AND ALL FLOOR PLANS AND DEVELOPMENT PLANS ARE SUBJECT TO CHANGE.



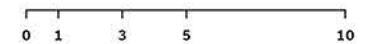
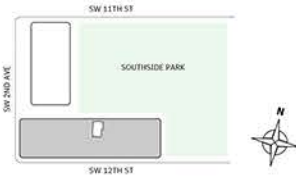
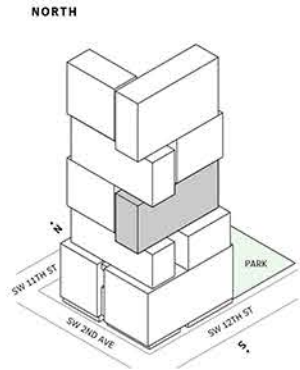
Residence 06

FLOORS 32-40

- ▲ South Tower
- ▲ Studio
- ▲ 1 Bathroom
- ▲ Interior: 518 sq ft
- ▲ Terrace: 105 sq ft

FEATURES

- ▲ Studio residence with North exposure
- ▲ 10' floor-to-ceiling windows and sliding glass doors with direct access to 5' deep terrace





Residence 07

FLOORS 42-51

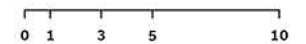
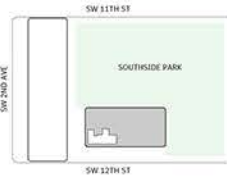
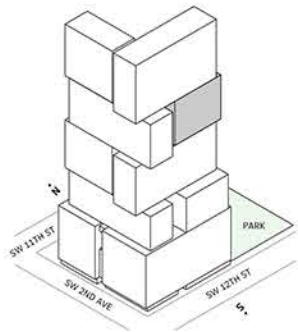
- ▲ South Tower
- ▲ 2 Bedroom
- ▲ 2 Bathroom
- ▲ Interior: 1,298 sq ft
- ▲ Terrace: 480 sq ft

FEATURES

- ▲ Corner two-bedroom residence with panoramic West to South exposure
- ▲ 10' floor-to-ceiling windows and sliding glass doors with direct access to 5' deep wrap-around terraces



NORTH





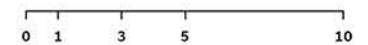
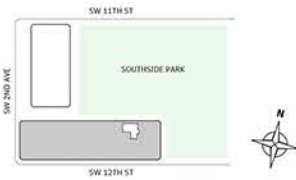
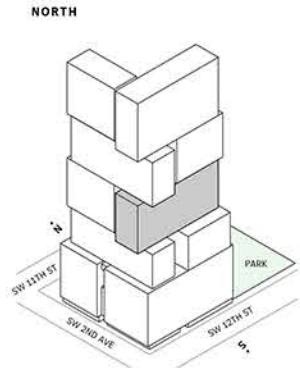
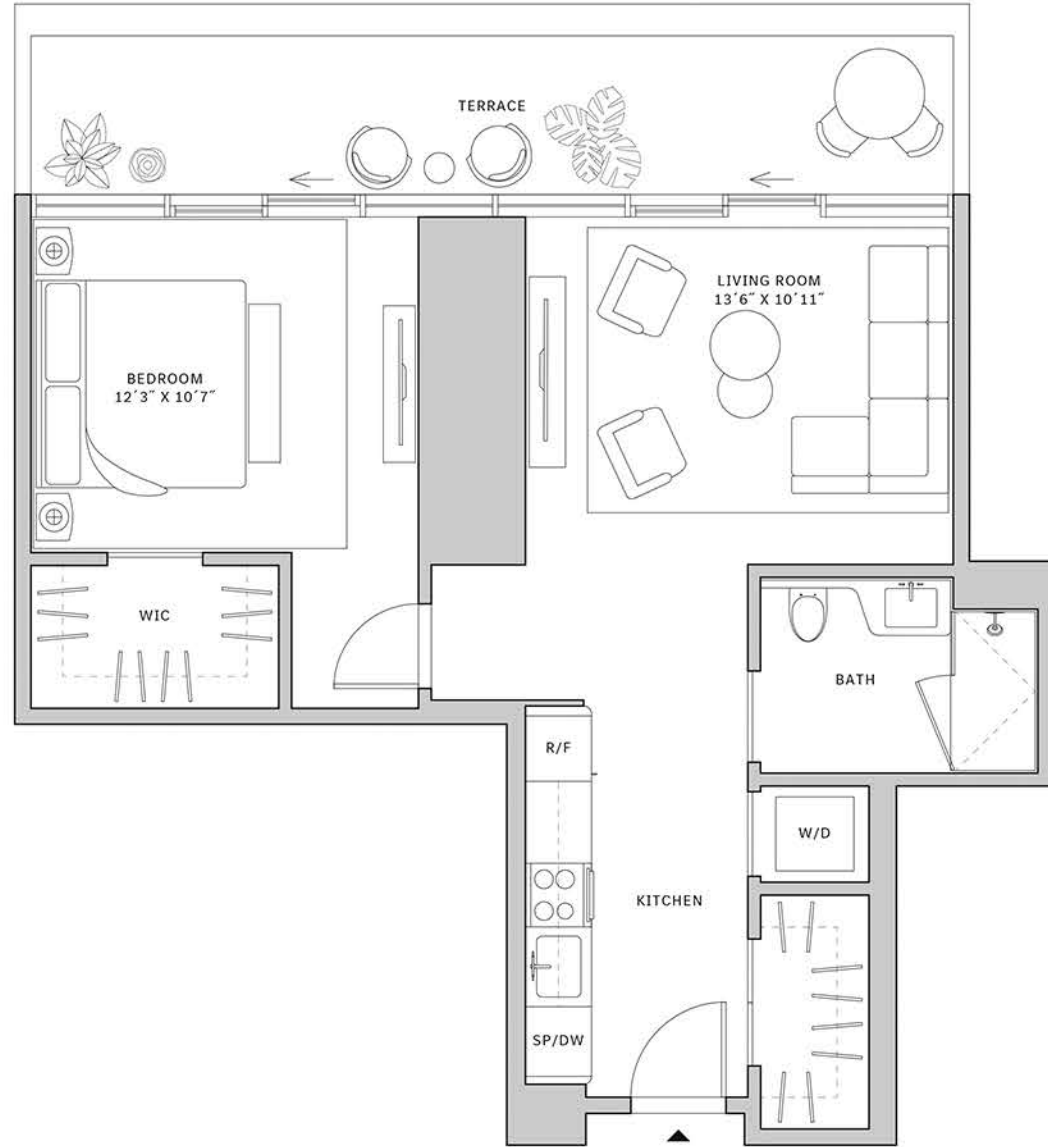
Residence 08

FLOORS 32-40

- ▲ South Tower
- ▲ 1 Bedroom
- ▲ 1 Bathroom
- ▲ Interior: 747 sq ft
- ▲ Terrace: 163 sq ft

FEATURES

- ▲ One bedroom residence with North exposure
- ▲ 10' floor-to-ceiling windows and sliding glass doors with direct access to 5' deep terrace



STATED DIMENSIONS ARE MEASURED TO THE EXTERIOR BOUNDARIES OF THE EXTERIOR WALLS AND THE CENTERLINE OF INTERIOR DEMISING WALLS AND IN FACT VARY FROM THE DIMENSIONS THAT WOULD BE DETERMINED BY USING THE DESCRIPTION AND DEFINITION OF THE "UNIT" SET FORTH IN THE DECLARATION WHICH GENERALLY ONLY INCLUDES THE INTERIOR AIRSPACE BETWEEN THE PERIMETER WALLS AND EXCLUDES INTERIOR STRUCTURAL COMPONENTS. FOR YOUR REFERENCE, THE AREA OF THE UNIT, DETERMINED IN ACCORDANCE WITH THOSE DEFINED UNIT BOUNDARIES, IS SET FORTH IN EXHIBIT 3 TO THE DECLARATION OF THE CONDOMINIUM. NOTE THAT MEASUREMENTS OF ROOMS SET FORTH ON THIS FLOOR PLAN ARE GENERALLY TAKEN AT THE GREATEST POINTS OF EACH GIVEN ROOM (AS IF THE ROOM WERE A PERFECT RECTANGLE), WITHOUT REGARD FOR ANY CUTOUTS. ACCORDINGLY, THE AREA OF THE ACTUAL ROOM WILL TYPICALLY BE SMALLER THAN THE PRODUCT OBTAINED BY MULTIPLYING THE STATED LENGTH TIMES WIDTH. ALL DIMENSIONS ARE APPROXIMATE AND MAY VARY WITH ACTUAL CONSTRUCTION, AND ALL FLOOR PLANS AND DEVELOPMENT PLANS ARE SUBJECT TO CHANGE.



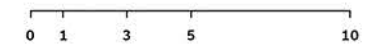
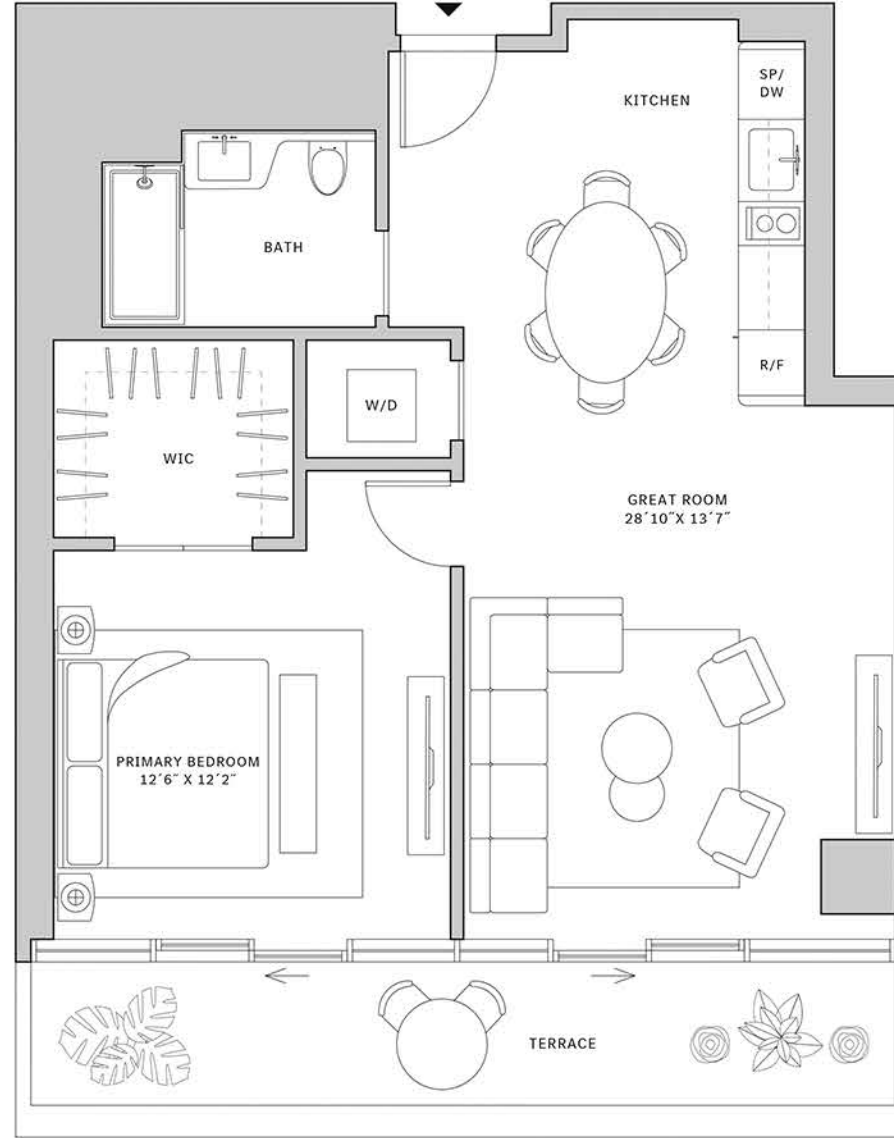
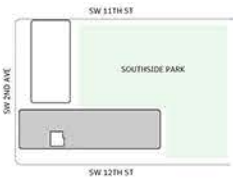
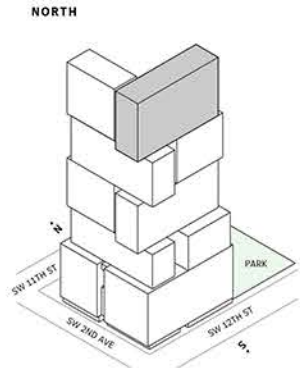
Residence 10

FLOOR 53-65

- ▲ South Tower
- ▲ 1 Bedroom
- ▲ 1 Bathroom
- ▲ Interior: 803 sq ft
- ▲ Terrace: 154 sq ft

FEATURES

- ▲ One bedroom residence with South exposure
- ▲ 10' floor-to-ceiling windows and sliding glass doors with direct access to 5' deep wrap-around terraces





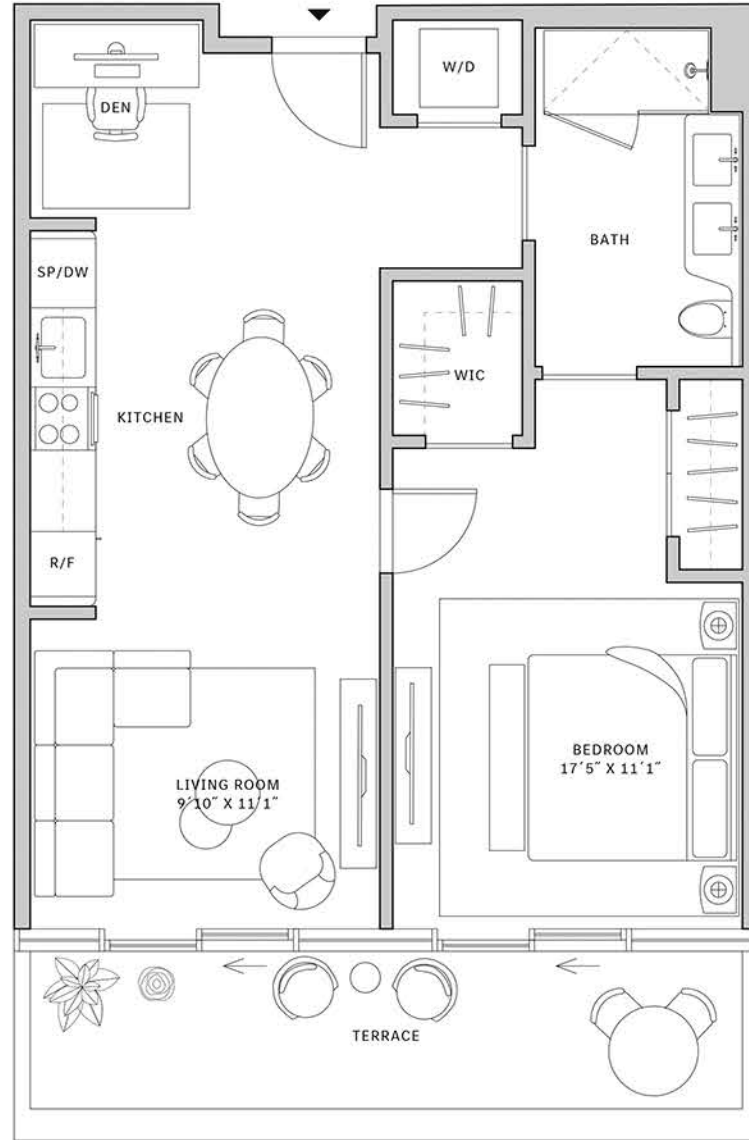
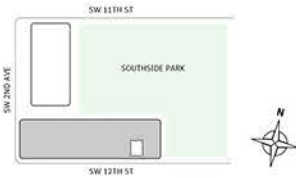
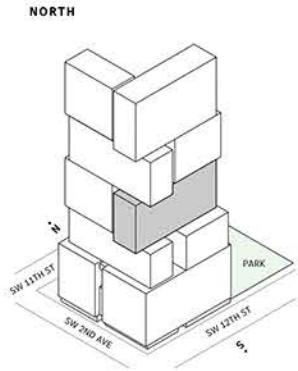
Residence 11

FLOORS 32-40

- ▲ South Tower
- ▲ 1 Bedroom
- ▲ 1 Bathroom
- ▲ 1 Den/Office
- ▲ Interior: 728 sq ft
- ▲ Terrace: 127 sq ft

FEATURES

- ▲ One bedroom residence with South exposure
- ▲ 10' floor-to-ceiling windows and sliding glass doors with direct access to 5' deep terrace





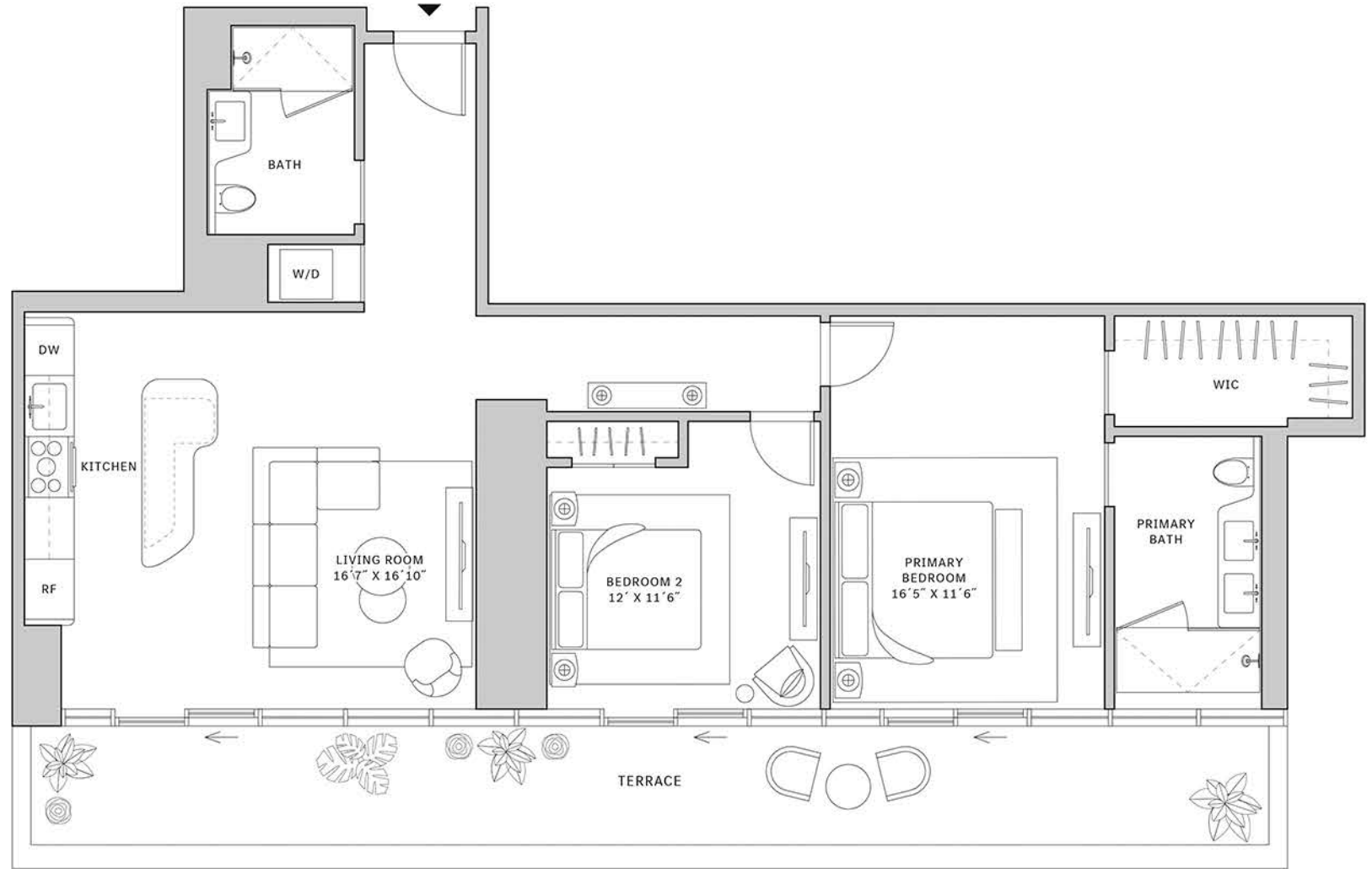
Residence 12

FLOORS 32-40

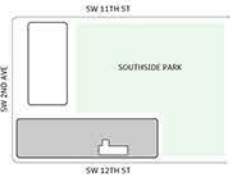
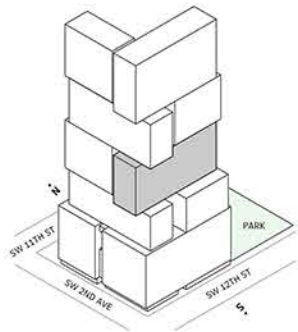
- ▲ South Tower
- ▲ 2 Bedrooms
- ▲ 2 Bathrooms
- ▲ Interior: 1,253 sq ft
- ▲ Terrace: 308 sq ft

FEATURES

- ▲ Two bedroom residence with South exposure
- ▲ 10' floor-to-ceiling windows and sliding glass doors with direct access to 5' deep terrace



NORTH



0 1 3 5 10





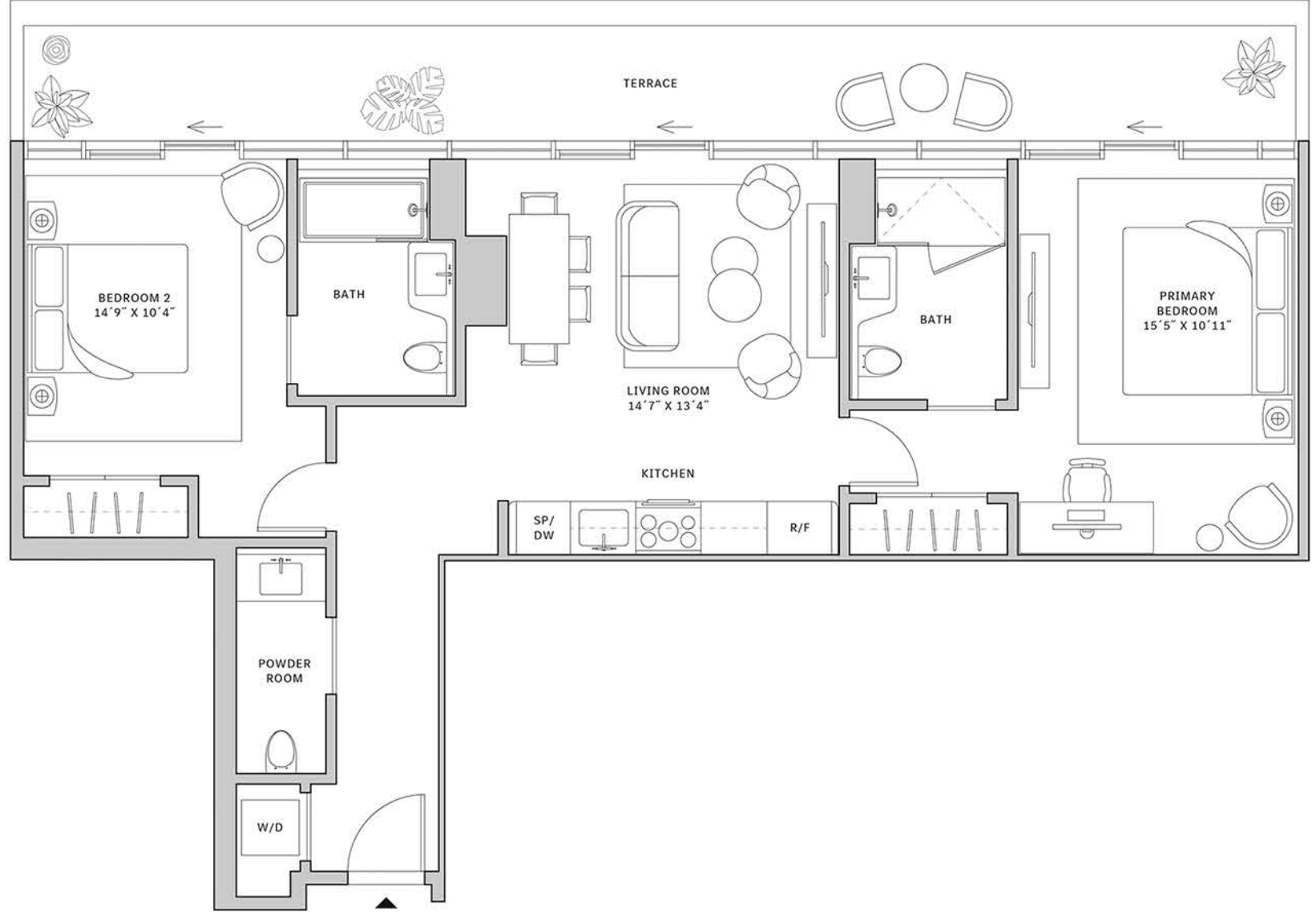
Residence 02

FLOORS 42-51

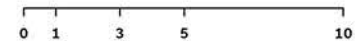
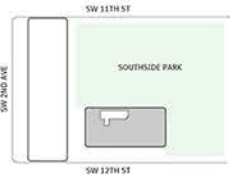
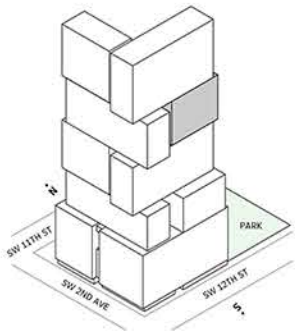
- ▲ South Tower
- ▲ 2 Bedrooms
- ▲ 2 Bathrooms
- ▲ 1 Powder Room
- ▲ Interior: 1,057 sq ft
- ▲ Terrace: 276 sq ft

FEATURES

- ▲ Two bedrooms residence with North exposure
- ▲ 10' floor-to-ceiling windows and sliding glass doors with direct access to 5' deep terraces



NORTH



STATED DIMENSIONS ARE MEASURED TO THE EXTERIOR BOUNDARIES OF THE EXTERIOR WALLS AND THE CENTERLINE OF INTERIOR DEMISING WALLS AND IN FACT VARY FROM THE DIMENSIONS THAT WOULD BE DETERMINED BY USING THE DESCRIPTION AND DEFINITION OF THE "UNIT" SET FORTH IN THE DECLARATION (WHICH GENERALLY INCLUDES THE INTERIOR AIRSPACE BETWEEN THE PERIMETER WALLS AND EXCLUDES INTERIOR STRUCTURAL COMPONENTS). FOR YOUR REFERENCE, THE AREA OF THE UNIT, DETERMINED IN ACCORDANCE WITH THOSE DEFINED UNIT BOUNDARIES, IS SET FORTH IN EXHIBIT 3 TO THE DECLARATION OF THE CONDOMINIUM. NOTE THAT MEASUREMENTS OF ROOMS SET FORTH ON THIS FLOOR PLAN ARE GENERALLY TAKEN AT THE GREATEST POINTS OF EACH GIVEN ROOM (AS IF THE ROOM WERE A PERFECT RECTANGLE), WITHOUT REGARD FOR ANY CUTOUTS. ACCORDINGLY, THE AREA OF THE ACTUAL ROOM WILL TYPICALLY BE SMALLER THAN THE PRODUCT OBTAINED BY MULTIPLYING THE STATED LENGTH TIMES WIDTH. ALL DIMENSIONS ARE APPROXIMATE AND MAY VARY WITH ACTUAL CONSTRUCTION, AND ALL FLOOR PLANS AND DEVELOPMENT PLANS ARE SUBJECT TO CHANGE.



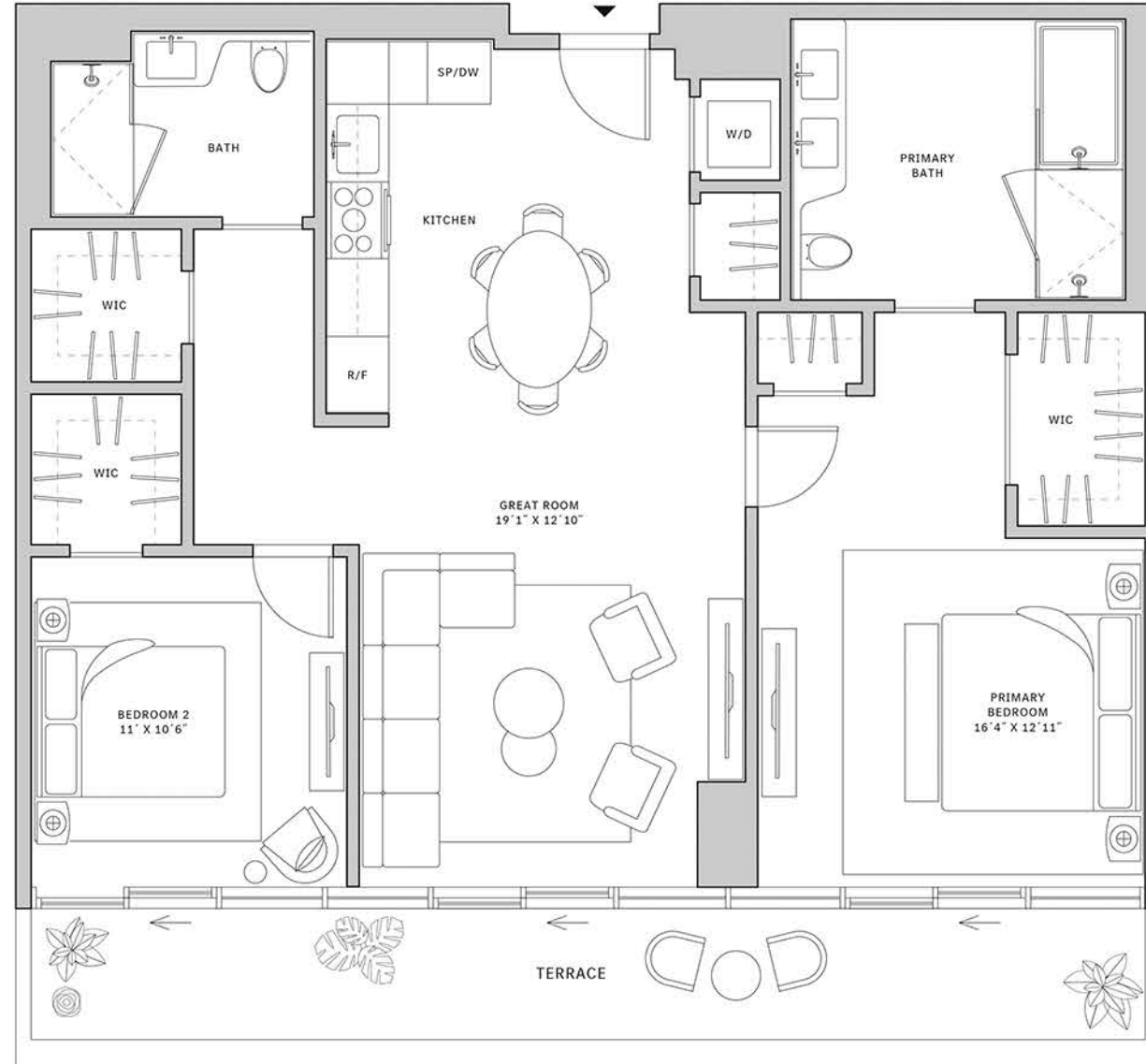
Residence 14

FLOORS 32-40

- ▲ South Tower
- ▲ 2 Bedrooms
- ▲ 2 Bathrooms
- ▲ Interior: 1,129 sq ft
- ▲ Terrace: 206 sq ft

FEATURES

- ▲ Two bedroom residence with South exposure
- ▲ 10' floor-to-ceiling windows and sliding glass doors with direct access to 5' deep terrace



NORTH

