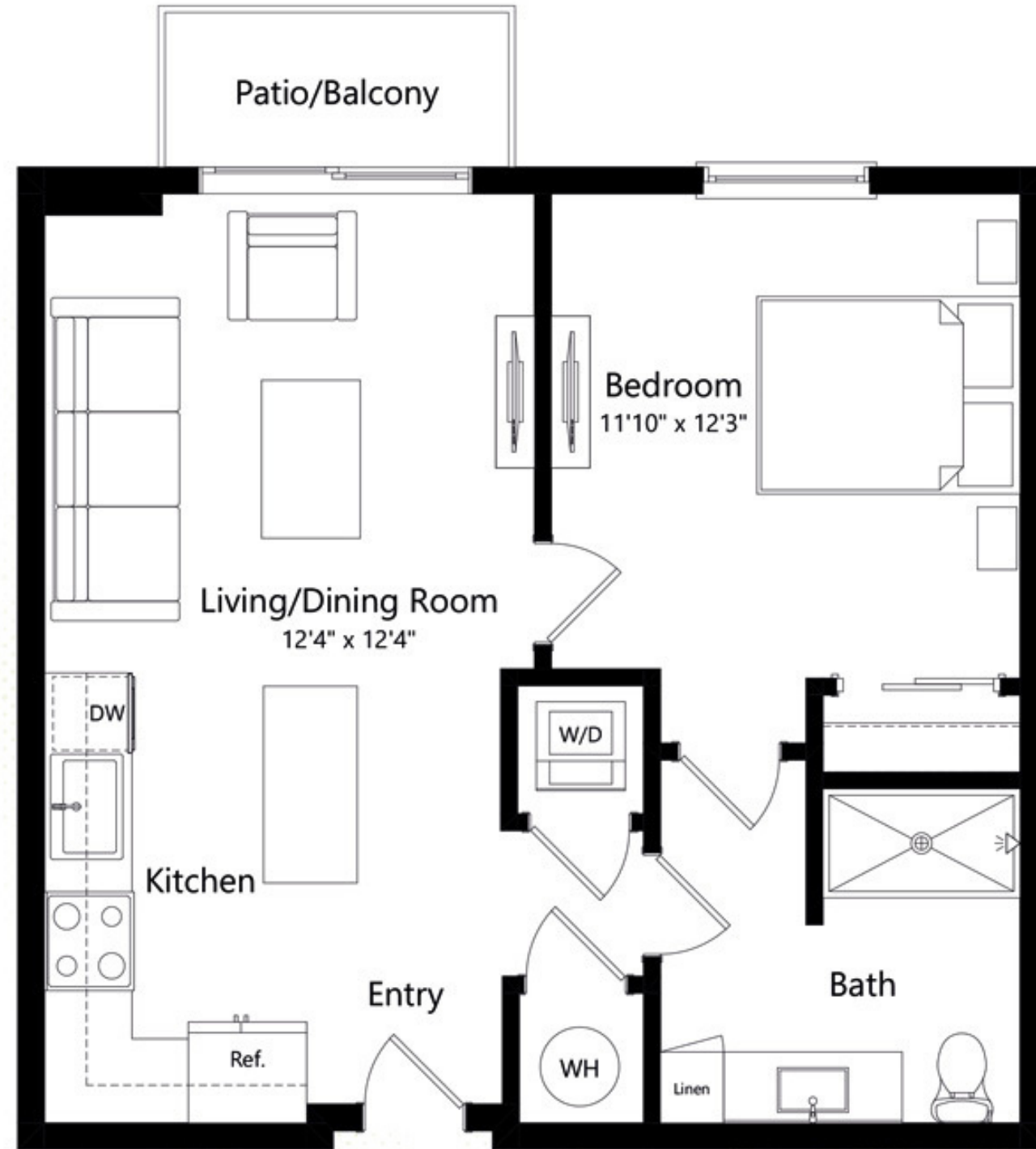


A1

1 BEDROOM 1 BATH

14

RIVER DISTRICT
MIAMI



INTERIOR
635 | 59

EXTERIOR
36 | 3

SQ FT | M

The dimensions stated for this unit floor plan are approximate because there are various recognized methods for calculating the square footage of a unit. The square footage stated here is calculated from the exterior boundaries of the exterior walls to the centerline of interior demising walls without deductions for cutouts, curves, or architectural features. This method typically results in quoted dimensions greater than the dimensions that would be determined by using other accepted methods. The definition of "Unit" and the calculation method to be relied upon is set forth in the Developer's Prospectus. The illustrations and images are conceptual and may vary from concept to actual construction. The floor plan, unit layout, locations of windows, doors, closets, plumbing fixtures, mechanical equipment, appliances, structural elements, architectural design elements, and the uses, configurations, and entries to rooms may change with based on final approved plans, permitting, and construction. The furniture plan and the uses of space illustrated are suggested uses only and not intended to guaranty any specific use of space. Furnishings, design features, fixtures, and décor illustrated are conceptual and may vary upon completion. The Developer, River North Property Owner LLC, is a licensee of ALTA Development LLC who is not the Developer. © 2023 with all rights reserved River North Property Owner LLC.



A2

1 BEDROOM 1 BATH

14

RIVER DISTRICT
MIAMI



INTERIOR
575 | 53

EXTERIOR
97 | 9

SQ FT | M

The dimensions stated for this unit floor plan are approximate because there are various recognized methods for calculating the square footage of a unit. The square footage stated here is calculated from the exterior boundaries of the exterior walls to the centerline of interior demising walls without deductions for cutouts, curves, or architectural features. This method typically results in quoted dimensions greater than the dimensions that would be determined by using other accepted methods. The definition of "Unit" and the calculation method to be relied upon is set forth in the Developer's Prospectus. The illustrations and images are conceptual and may vary from concept to actual construction. The floor plan, unit layout, locations of windows, doors, closets, plumbing fixtures, mechanical equipment, appliances, structural elements, architectural design elements, and the uses, configurations, and entries to rooms may change with based on final approved plans, permitting, and construction. The furniture plan and the uses of space illustrated are suggested uses only and not intended to guaranty any specific use of space. Furnishings, design features, fixtures, and décor illustrated are conceptual and may vary upon completion. The Developer, River North Property Owner LLC, is a licensee of ALTA Development LLC who is not the Developer. © 2023 with all rights reserved River North Property Owner LLC.

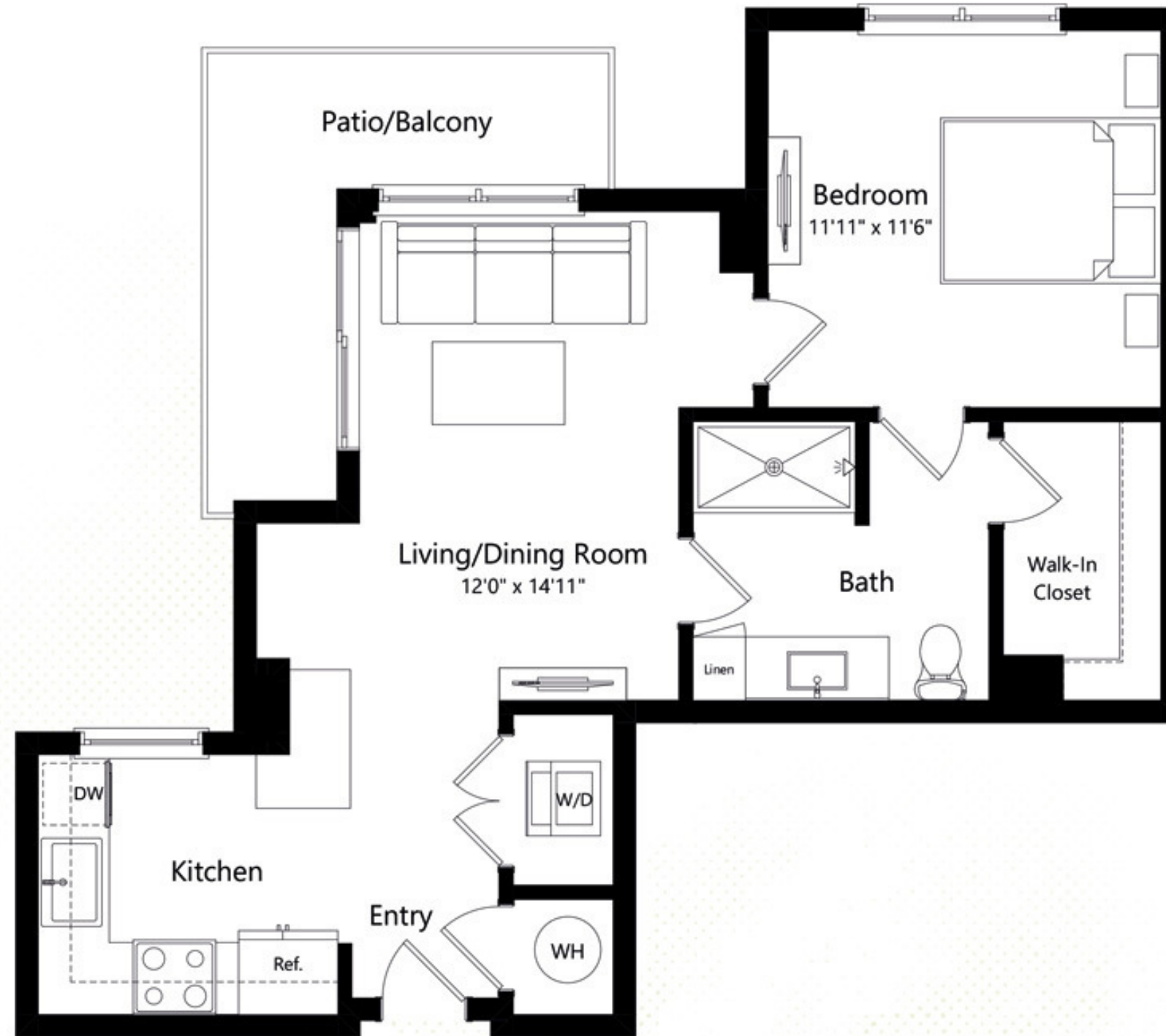


B1

1 BEDROOM 1 BATH

14

RIVER DISTRICT
MIAMI



INTERIOR
640 | 59

EXTERIOR
89 | 8

SQ FT | M

The dimensions stated for this unit floor plan are approximate because there are various recognized methods for calculating the square footage of a unit. The square footage stated here is calculated from the exterior boundaries of the exterior walls to the centerline of interior demising walls without deductions for cutouts, curves, or architectural features. This method typically results in quoted dimensions greater than the dimensions that would be determined by using other accepted methods. The definition of "Unit" and the calculation method to be relied upon is set forth in the Developer's Prospectus. The illustrations and images are conceptual and may vary from concept to actual construction. The floor plan, unit layout, locations of windows, doors, closets, plumbing fixtures, mechanical equipment, appliances, structural elements, architectural design elements, and the uses, configurations, and entries to rooms may change with based on final approved plans, permitting, and construction. The furniture plan and the uses of space illustrated are suggested uses only and not intended to guaranty any specific use of space. Furnishings, design features, fixtures, and décor illustrated are conceptual and may vary upon completion. The Developer, River North Property Owner LLC, is a licensee of ALTA Development LLC who is not the Developer. © 2023 with all rights reserved River North Property Owner LLC.

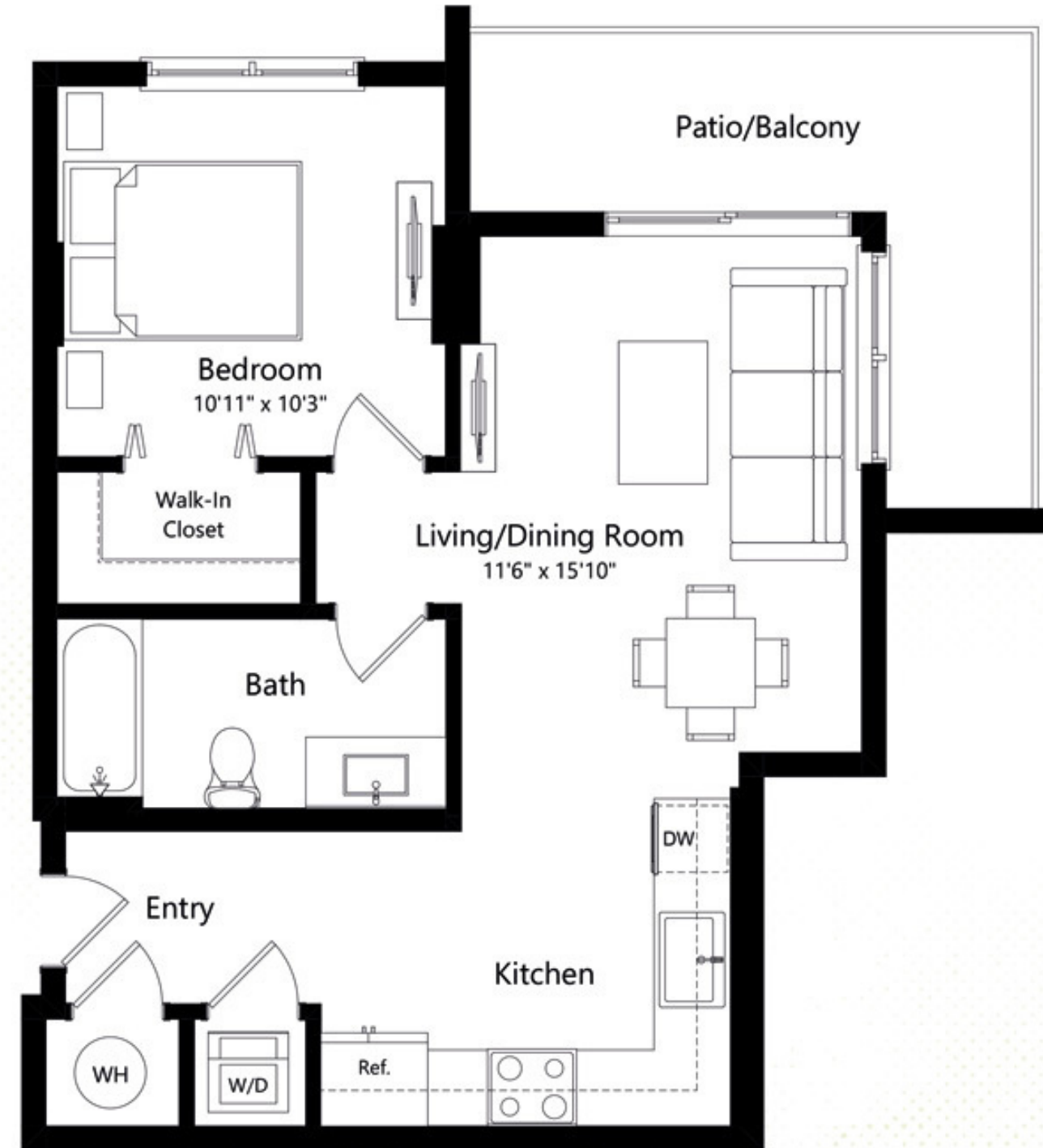


B2

1 BEDROOM 1 BATH

14

RIVER DISTRICT
MIAMI



INTERIOR
640 | 59

EXTERIOR
112 | 10

SQ FT | M

The dimensions stated for this unit floor plan are approximate because there are various recognized methods for calculating the square footage of a unit. The square footage stated here is calculated from the exterior boundaries of the exterior walls to the centerline of interior demising walls without deductions for cutouts, curves, or architectural features. This method typically results in quoted dimensions greater than the dimensions that would be determined by using other accepted methods. The definition of "Unit" and the calculation method to be relied upon is set forth in the Developer's Prospectus. The illustrations and images are conceptual and may vary from concept to actual construction. The floor plan, unit layout, locations of windows, doors, closets, plumbing fixtures, mechanical equipment, appliances, structural elements, architectural design elements, and the uses, configurations, and entries to rooms may change with based on final approved plans, permitting, and construction. The furniture plan and the uses of space illustrated are suggested uses only and not intended to guaranty any specific use of space. Furnishings, design features, fixtures, and décor illustrated are conceptual and may vary upon completion. The Developer, River North Property Owner LLC, is a licensee of ALTA Development LLC who is not the Developer. © 2023 with all rights reserved River North Property Owner LLC.

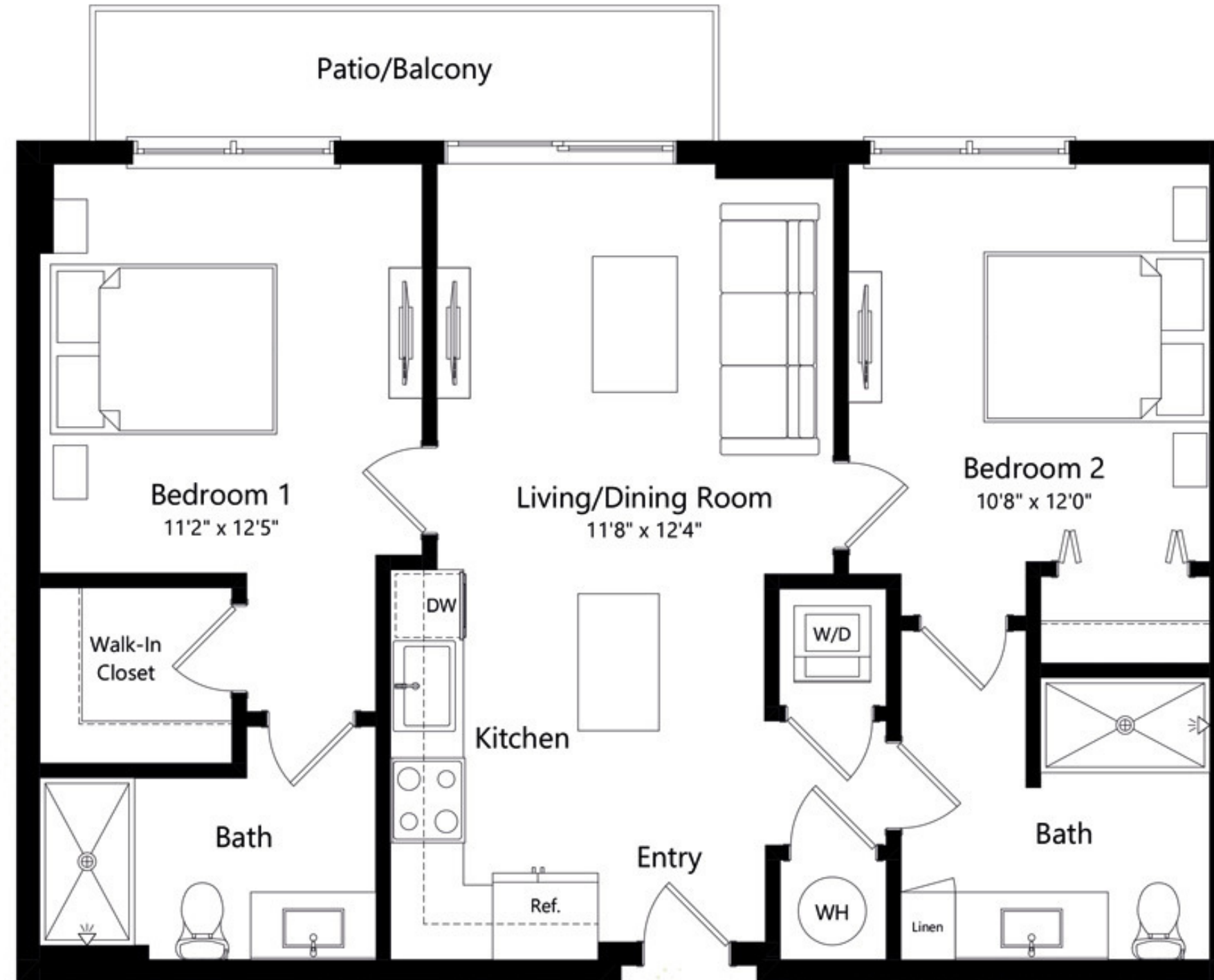


C1

2 BEDROOM 2 BATH

14

RIVER DISTRICT
MIAMI



INTERIOR
865 | 80.3

EXTERIOR
76 | 7

SQ FT | M

The dimensions stated for this unit floor plan are approximate because there are various recognized methods for calculating the square footage of a unit. The square footage stated here is calculated from the exterior boundaries of the exterior walls to the centerline of interior demising walls without deductions for cutouts, curves, or architectural features. This method typically results in quoted dimensions greater than the dimensions that would be determined by using other accepted methods. The definition of "Unit" and the calculation method to be relied upon is set forth in the Developer's Prospectus. The illustrations and images are conceptual and may vary from concept to actual construction. The floor plan, unit layout, locations of windows, doors, closets, plumbing fixtures, mechanical equipment, appliances, structural elements, architectural design elements, and the uses, configurations, and entries to rooms may change with based on final approved plans, permitting, and construction. The furniture plan and the uses of space illustrated are suggested uses only and not intended to guaranty any specific use of space. Furnishings, design features, fixtures, and décor illustrated are conceptual and may vary upon completion. The Developer, River North Property Owner LLC, is a licensee of ALTA Development LLC who is not the Developer. © 2023 with all rights reserved River North Property Owner LLC.

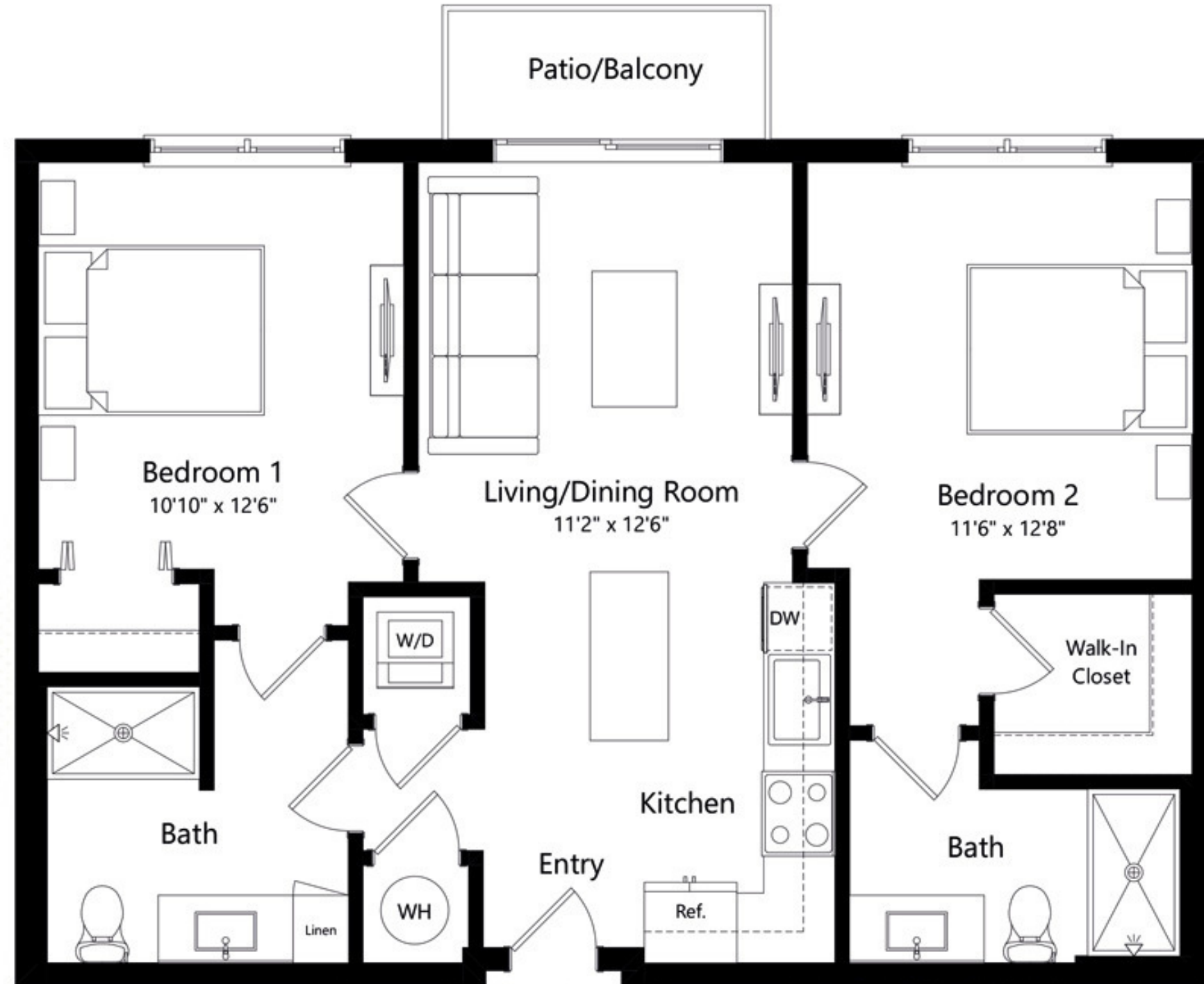


C1A

2 BEDROOM 2 BATH

14

RIVER DISTRICT
MIAMI



INTERIOR
875 | 81

EXTERIOR
40 | 4

SQ FT | M

The dimensions stated for this unit floor plan are approximate because there are various recognized methods for calculating the square footage of a unit. The square footage stated here is calculated from the exterior boundaries of the exterior walls to the centerline of interior demising walls without deductions for cutouts, curves, or architectural features. This method typically results in quoted dimensions greater than the dimensions that would be determined by using other accepted methods. The definition of "Unit" and the calculation method to be relied upon is set forth in the Developer's Prospectus. The illustrations and images are conceptual and may vary from concept to actual construction. The floor plan, unit layout, locations of windows, doors, closets, plumbing fixtures, mechanical equipment, appliances, structural elements, architectural design elements, and the uses, configurations, and entries to rooms may change with based on final approved plans, permitting, and construction. The furniture plan and the uses of space illustrated are suggested uses only and not intended to guaranty any specific use of space. Furnishings, design features, fixtures, and décor illustrated are conceptual and may vary upon completion. The Developer, River North Property Owner LLC, is a licensee of ALTA Development LLC who is not the Developer. © 2023 with all rights reserved River North Property Owner LLC.

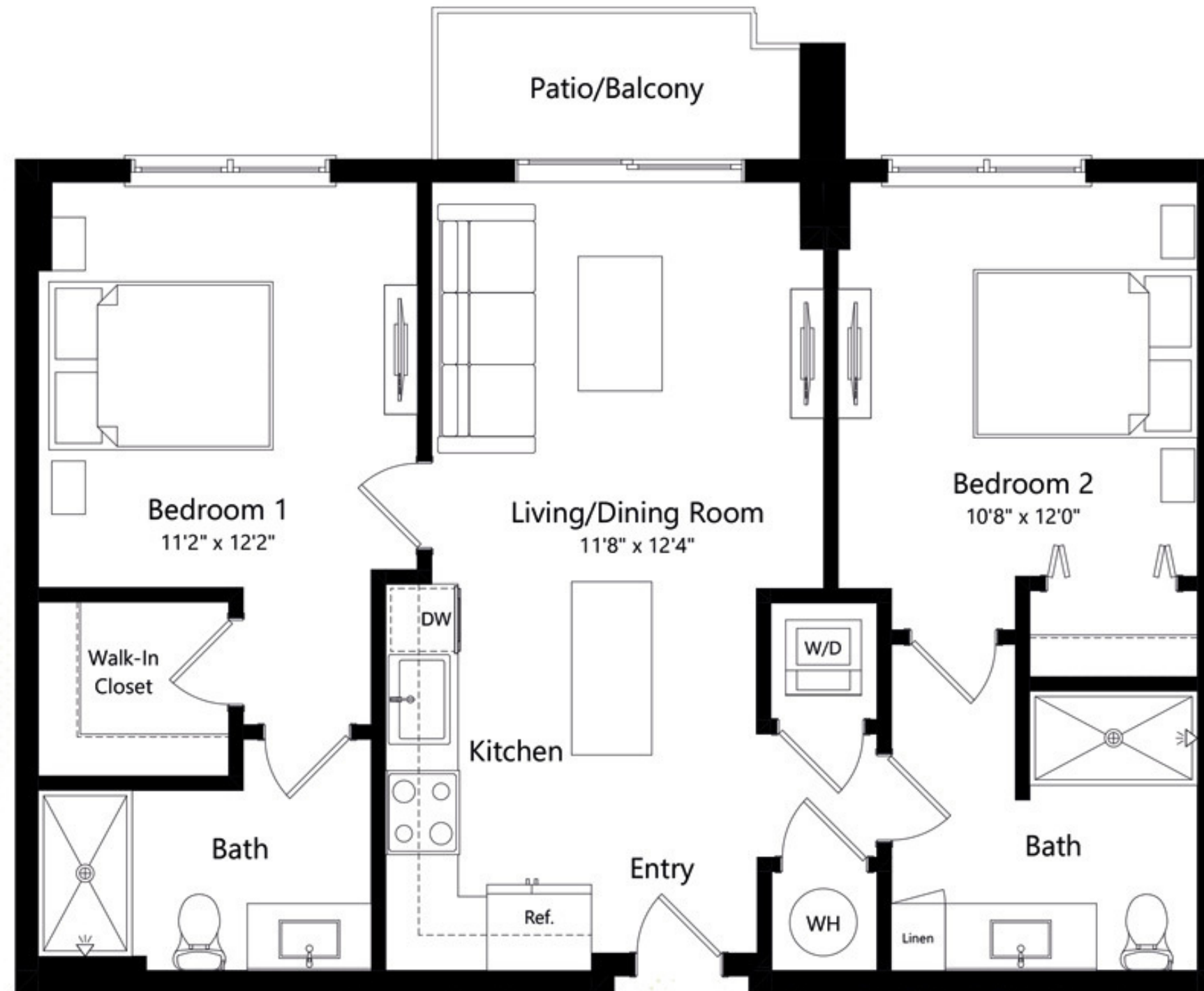


C1B

2 BEDROOM 2 BATH

14

RIVER DISTRICT
MIAMI



INTERIOR
880 | 81.75

EXTERIOR
52 | 5

SQ FT | M

The dimensions stated for this unit floor plan are approximate because there are various recognized methods for calculating the square footage of a unit. The square footage stated here is calculated from the exterior boundaries of the exterior walls to the centerline of interior demising walls without deductions for cutouts, curves, or architectural features. This method typically results in quoted dimensions greater than the dimensions that would be determined by using other accepted methods. The definition of "Unit" and the calculation method to be relied upon is set forth in the Developer's Prospectus. The illustrations and images are conceptual and may vary from concept to actual construction. The floor plan, unit layout, locations of windows, doors, closets, plumbing fixtures, mechanical equipment, appliances, structural elements, architectural design elements, and the uses, configurations, and entries to rooms may change with based on final approved plans, permitting, and construction. The furniture plan and the uses of space illustrated are suggested uses only and not intended to guaranty any specific use of space. Furnishings, design features, fixtures, and décor illustrated are conceptual and may vary upon completion. The Developer, River North Property Owner LLC, is a licensee of ALTA Development LLC who is not the Developer. © 2023 with all rights reserved River North Property Owner LLC.

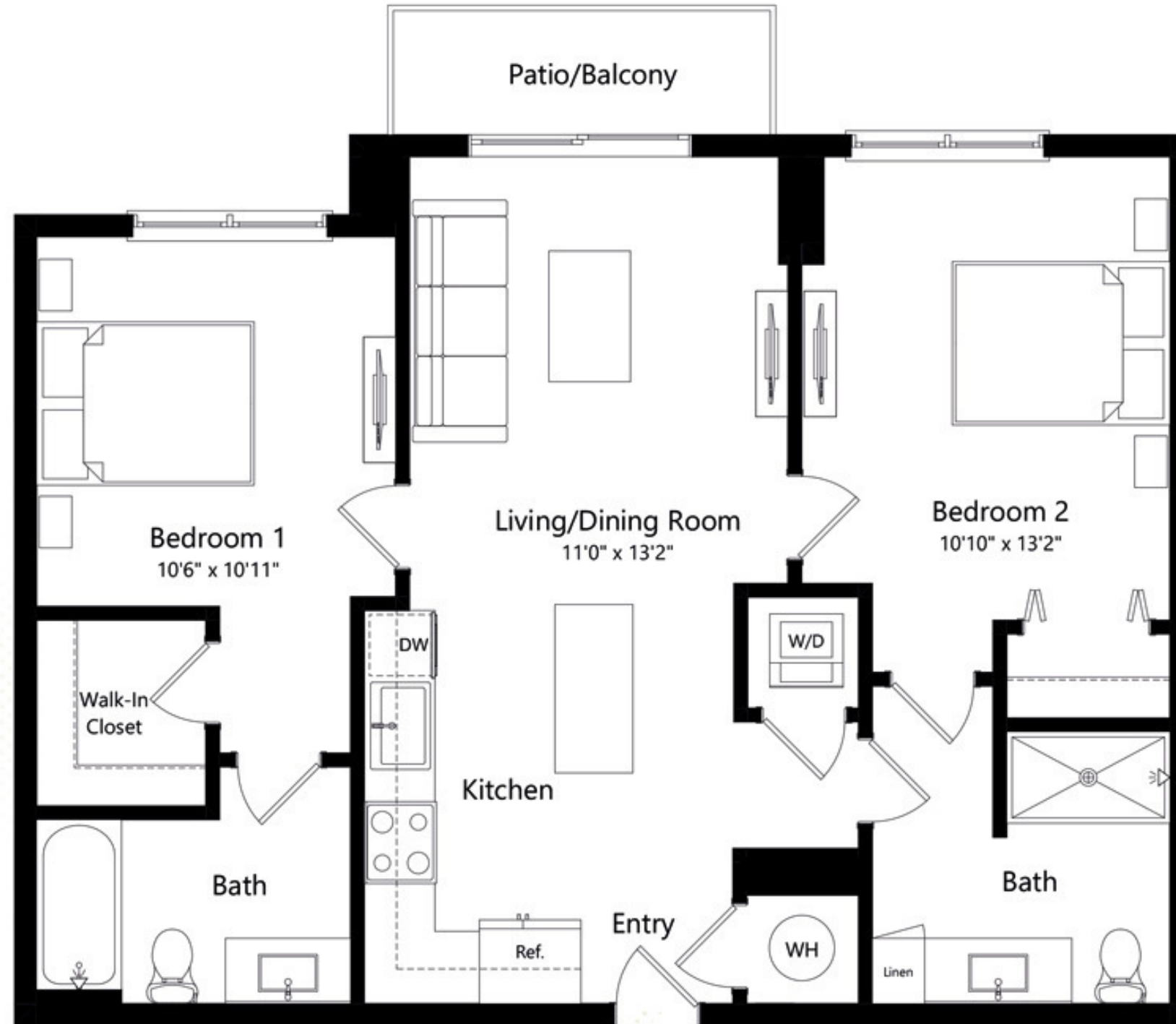


C1C

2 BEDROOM 2 BATH

14

RIVER DISTRICT
MIAMI



INTERIOR
875 | 81

EXTERIOR
48 | 5

SQ FT | M

The dimensions stated for this unit floor plan are approximate because there are various recognized methods for calculating the square footage of a unit. The square footage stated here is calculated from the exterior boundaries of the exterior walls to the centerline of interior demising walls without deductions for cutouts, curves, or architectural features. This method typically results in quoted dimensions greater than the dimensions that would be determined by using other accepted methods. The definition of "Unit" and the calculation method to be relied upon is set forth in the Developer's Prospectus. The illustrations and images are conceptual and may vary from concept to actual construction. The floor plan, unit layout, locations of windows, doors, closets, plumbing fixtures, mechanical equipment, appliances, structural elements, architectural design elements, and the uses, configurations, and entries to rooms may change with based on final approved plans, permitting, and construction. The furniture plan and the uses of space illustrated are suggested uses only and not intended to guaranty any specific use of space. Furnishings, design features, fixtures, and décor illustrated are conceptual and may vary upon completion. The Developer, River North Property Owner LLC, is a licensee of ALTA Development LLC who is not the Developer. © 2023 with all rights reserved River North Property Owner LLC.

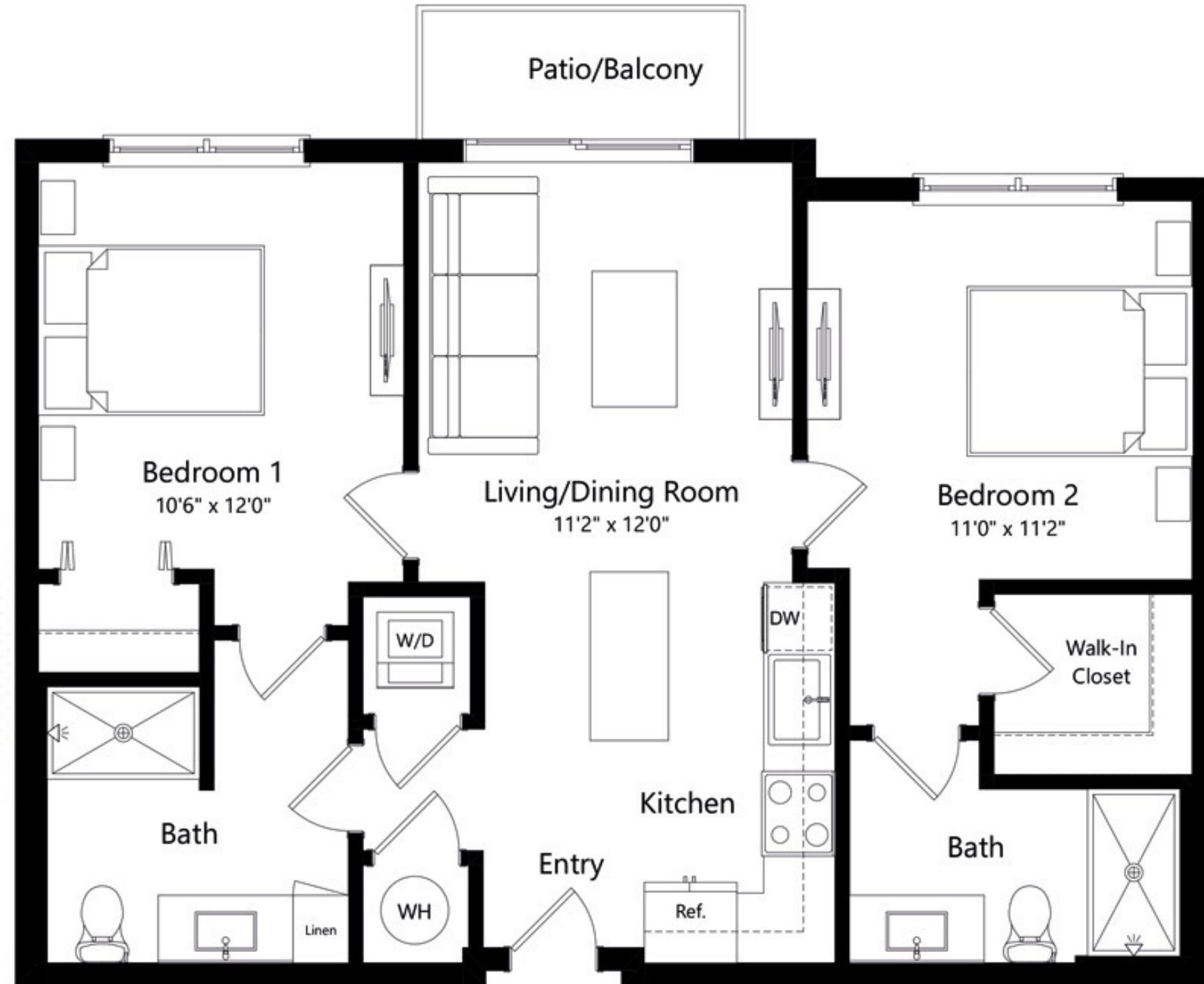


C1D

2 BEDROOM 2 BATH

14

RIVER DISTRICT
MIAMI



INTERIOR
850 | 79

EXTERIOR
40 | 4

SQ FT | M

The dimensions stated for this unit floor plan are approximate because there are various recognized methods for calculating the square footage of a unit. The square footage stated here is calculated from the exterior boundaries of the exterior walls to the centerline of interior demising walls without deductions for cutouts, curves, or architectural features. This method typically results in quoted dimensions greater than the dimensions that would be determined by using other accepted methods. The definition of "Unit" and the calculation method to be relied upon is set forth in the Developer's Prospectus. The illustrations and images are conceptual and may vary from concept to actual construction. The floor plan, unit layout, locations of windows, doors, closets, plumbing fixtures, mechanical equipment, appliances, structural elements, architectural design elements, and the uses, configurations, and entries to rooms may change with based on final approved plans, permitting, and construction. The furniture plan and the uses of space illustrated are suggested uses only and not intended to guaranty any specific use of space. Furnishings, design features, fixtures, and décor illustrated are conceptual and may vary upon completion. The Developer, River North Property Owner LLC, is a licensee of ALTA Development LLC who is not the Developer. © 2023 with all rights reserved River North Property Owner LLC.

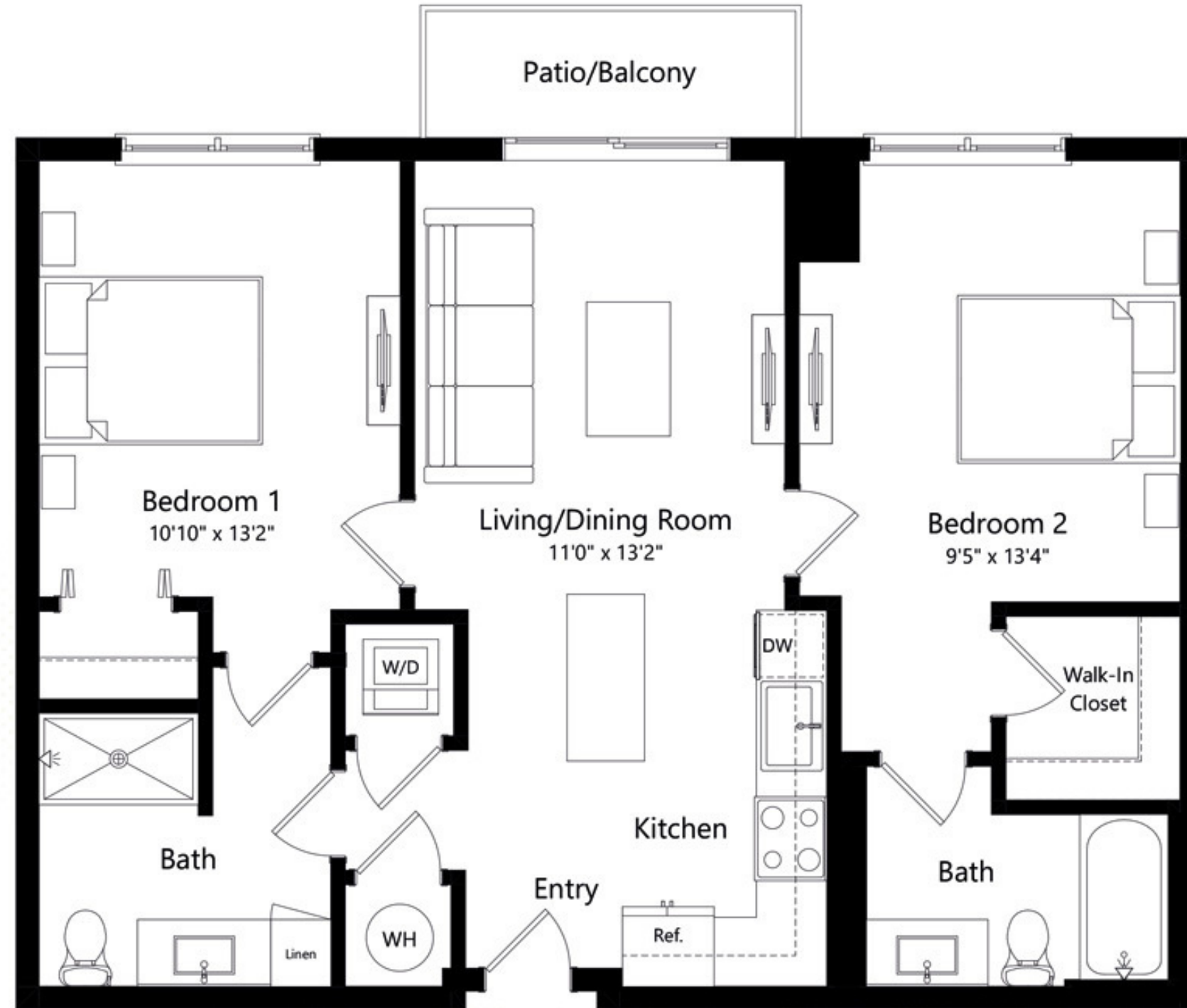


C1E

2 BEDROOM 2 BATH

14

RIVER DISTRICT
MIAMI



INTERIOR
880 | 81.75

EXTERIOR
48 | 4

SQ FT | M

The dimensions stated for this unit floor plan are approximate because there are various recognized methods for calculating the square footage of a unit. The square footage stated here is calculated from the exterior boundaries of the exterior walls to the centerline of interior demising walls without deductions for cutouts, curves, or architectural features. This method typically results in quoted dimensions greater than the dimensions that would be determined by using other accepted methods. The definition of "Unit" and the calculation method to be relied upon is set forth in the Developer's Prospectus. The illustrations and images are conceptual and may vary from concept to actual construction. The floor plan, unit layout, locations of windows, doors, closets, plumbing fixtures, mechanical equipment, appliances, structural elements, architectural design elements, and the uses, configurations, and entries to rooms may change with based on final approved plans, permitting, and construction. The furniture plan and the uses of space illustrated are suggested uses only and not intended to guaranty any specific use of space. Furnishings, design features, fixtures, and décor illustrated are conceptual and may vary upon completion. The Developer, River North Property Owner LLC, is a licensee of ALTA Development LLC who is not the Developer. © 2023 with all rights reserved River North Property Owner LLC.

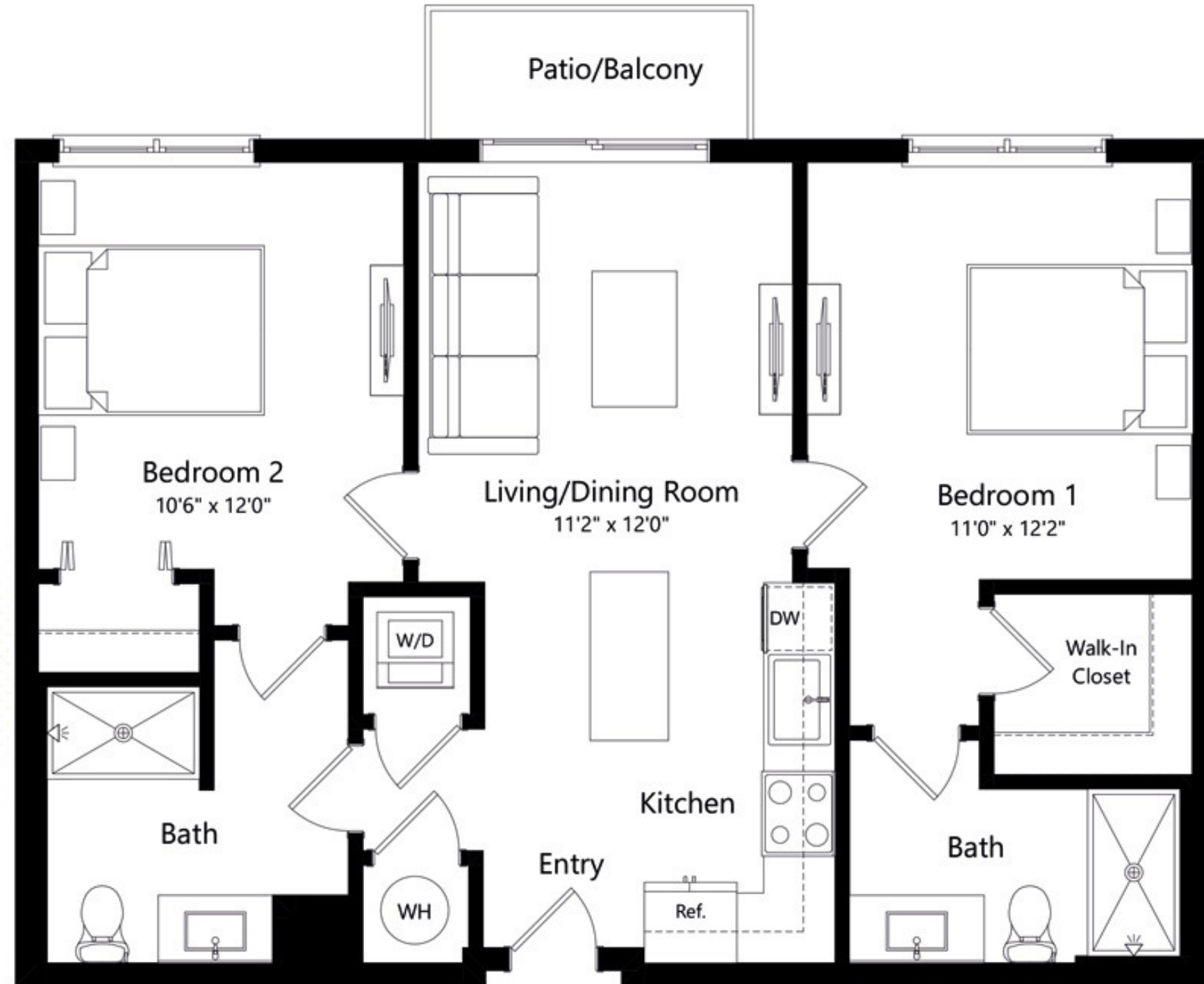


C1F

2 BEDROOM 2 BATH

14

RIVER DISTRICT
MIAMI



INTERIOR
880 | 81.75

EXTERIOR
48 | 4

SQ FT | M

The dimensions stated for this unit floor plan are approximate because there are various recognized methods for calculating the square footage of a unit. The square footage stated here is calculated from the exterior boundaries of the exterior walls to the centerline of interior demising walls without deductions for cutouts, curves, or architectural features. This method typically results in quoted dimensions greater than the dimensions that would be determined by using other accepted methods. The definition of "Unit" and the calculation method to be relied upon is set forth in the Developer's Prospectus. The illustrations and images are conceptual and may vary from concept to actual construction. The floor plan, unit layout, locations of windows, doors, closets, plumbing fixtures, mechanical equipment, appliances, structural elements, architectural design elements, and the uses, configurations, and entries to rooms may change with based on final approved plans, permitting, and construction. The furniture plan and the uses of space illustrated are suggested uses only and not intended to guaranty any specific use of space. Furnishings, design features, fixtures, and décor illustrated are conceptual and may vary upon completion. The Developer, River North Property Owner LLC, is a licensee of ALTA Development LLC who is not the Developer. © 2023 with all rights reserved River North Property Owner LLC.

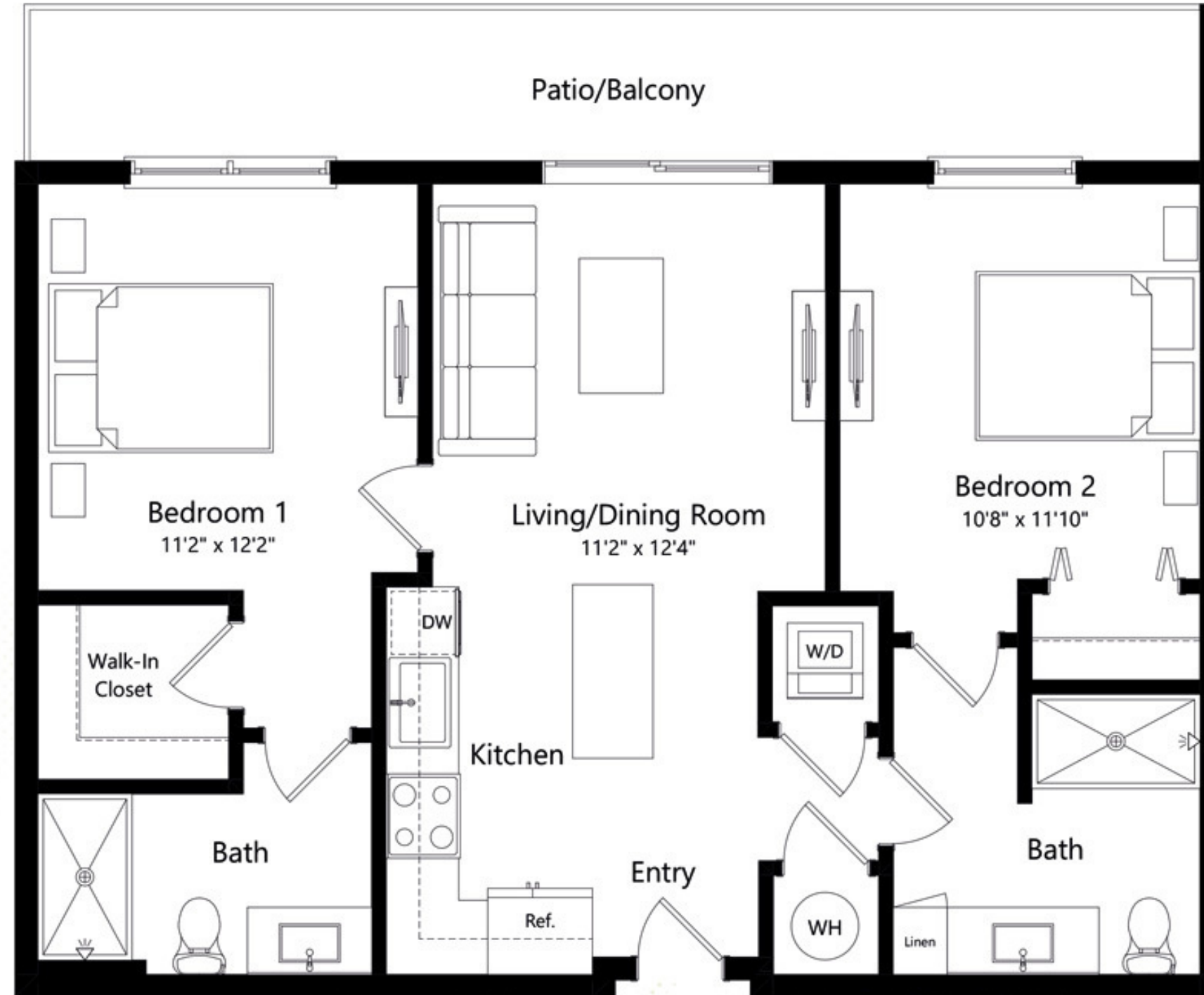


C1G

2 BEDROOM 2 BATH

14

RIVER DISTRICT
MIAMI



INTERIOR
865 | 80.3

EXTERIOR
155 | 14

SQ FT | M

The dimensions stated for this unit floor plan are approximate because there are various recognized methods for calculating the square footage of a unit. The square footage stated here is calculated from the exterior boundaries of the exterior walls to the centerline of interior demising walls without deductions for cutouts, curves, or architectural features. This method typically results in quoted dimensions greater than the dimensions that would be determined by using other accepted methods. The definition of "Unit" and the calculation method to be relied upon is set forth in the Developer's Prospectus. The illustrations and images are conceptual and may vary from concept to actual construction. The floor plan, unit layout, locations of windows, doors, closets, plumbing fixtures, mechanical equipment, appliances, structural elements, architectural design elements, and the uses, configurations, and entries to rooms may change with based on final approved plans, permitting, and construction. The furniture plan and the uses of space illustrated are suggested uses only and not intended to guaranty any specific use of space. Furnishings, design features, fixtures, and décor illustrated are conceptual and may vary upon completion. The Developer, River North Property Owner LLC, is a licensee of ALTA Development LLC who is not the Developer. © 2023 with all rights reserved River North Property Owner LLC.

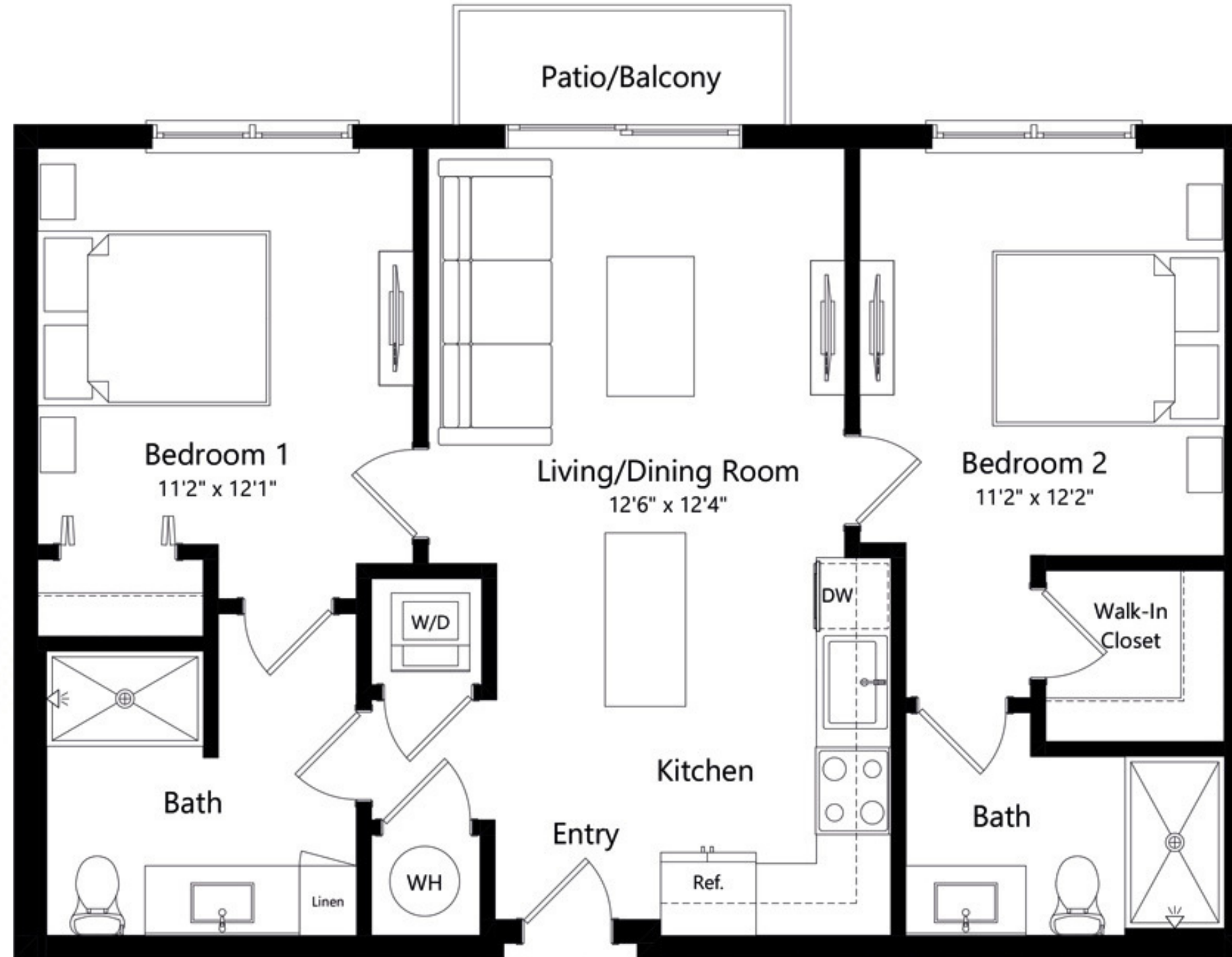


C2A

2 BEDROOM 2 BATH

14

RIVER DISTRICT
MIAMI



INTERIOR
915 | 85

EXTERIOR
40 | 4

SQ FT | M

The dimensions stated for this unit floor plan are approximate because there are various recognized methods for calculating the square footage of a unit. The square footage stated here is calculated from the exterior boundaries of the exterior walls to the centerline of interior demising walls without deductions for cutouts, curves, or architectural features. This method typically results in quoted dimensions greater than the dimensions that would be determined by using other accepted methods. The definition of "Unit" and the calculation method to be relied upon is set forth in the Developer's Prospectus. The illustrations and images are conceptual and may vary from concept to actual construction. The floor plan, unit layout, locations of windows, doors, closets, plumbing fixtures, mechanical equipment, appliances, structural elements, architectural design elements, and the uses, configurations, and entries to rooms may change with based on final approved plans, permitting, and construction. The furniture plan and the uses of space illustrated are suggested uses only and not intended to guaranty any specific use of space. Furnishings, design features, fixtures, and décor illustrated are conceptual and may vary upon completion. The Developer, River North Property Owner LLC, is a licensee of ALTA Development LLC who is not the Developer. © 2023 with all rights reserved River North Property Owner LLC.

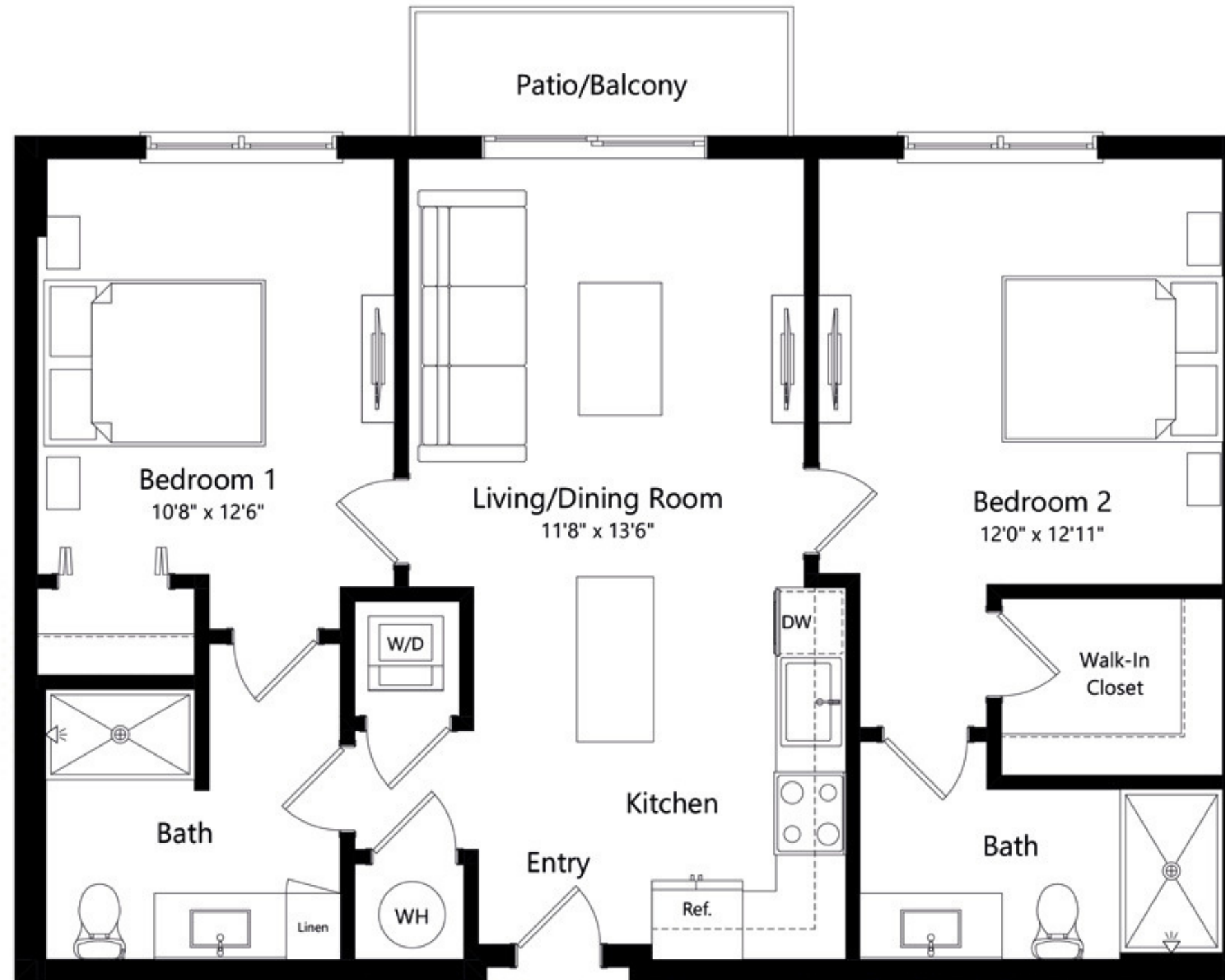


C2B

2 BEDROOM 2 BATH

14

RIVER DISTRICT
MIAMI



INTERIOR
910 | 85

EXTERIOR
48 | 5

SQ FT | M

The dimensions stated for this unit floor plan are approximate because there are various recognized methods for calculating the square footage of a unit. The square footage stated here is calculated from the exterior boundaries of the exterior walls to the centerline of interior demising walls without deductions for cutouts, curves, or architectural features. This method typically results in quoted dimensions greater than the dimensions that would be determined by using other accepted methods. The definition of "Unit" and the calculation method to be relied upon is set forth in the Developer's Prospectus. The illustrations and images are conceptual and may vary from concept to actual construction. The floor plan, unit layout, locations of windows, doors, closets, plumbing fixtures, mechanical equipment, appliances, structural elements, architectural design elements, and the uses, configurations, and entries to rooms may change with based on final approved plans, permitting, and construction. The furniture plan and the uses of space illustrated are suggested uses only and not intended to guaranty any specific use of space. Furnishings, design features, fixtures, and décor illustrated are conceptual and may vary upon completion. The Developer, River North Property Owner LLC, is a licensee of ALTA Development LLC who is not the Developer. © 2023 with all rights reserved River North Property Owner LLC.

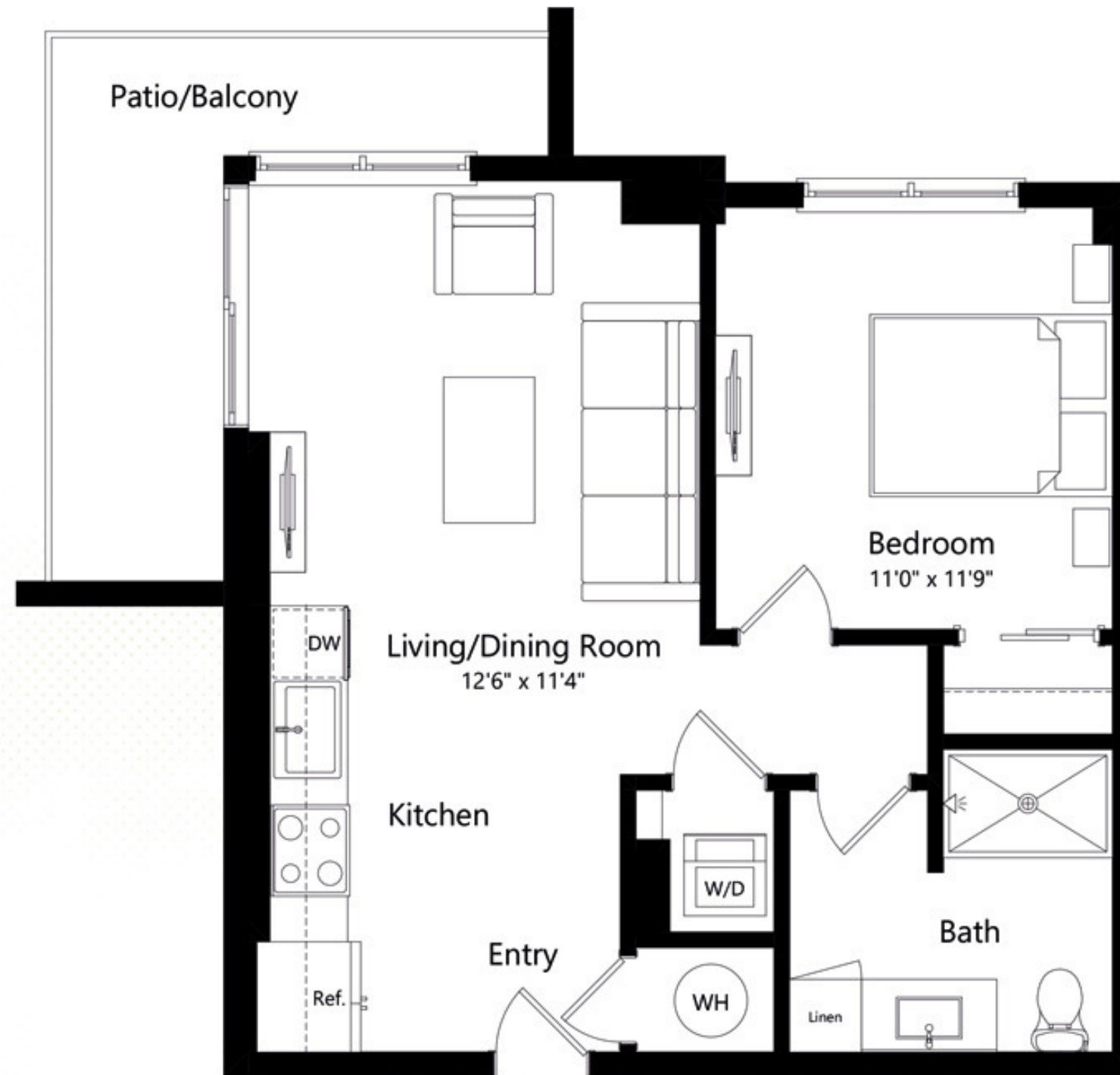


D1 & D1B

1 BEDROOM 1 BATH

14

RIVER DISTRICT
MIAMI



INTERIOR
600 | 56

EXTERIOR
107 | 10

SQ FT | M

The dimensions stated for this unit floor plan are approximate because there are various recognized methods for calculating the square footage of a unit. The square footage stated here is calculated from the exterior boundaries of the exterior walls to the centerline of interior demising walls without deductions for cutouts, curves, or architectural features. This method typically results in quoted dimensions greater than the dimensions that would be determined by using other accepted methods. The definition of "Unit" and the calculation method to be relied upon is set forth in the Developer's Prospectus. The illustrations and images are conceptual and may vary from concept to actual construction. The floor plan, unit layout, locations of windows, doors, closets, plumbing fixtures, mechanical equipment, appliances, structural elements, architectural design elements, and the uses, configurations, and entries to rooms may change with based on final approved plans, permitting, and construction. The furniture plan and the uses of space illustrated are suggested uses only and not intended to guaranty any specific use of space. Furnishings, design features, fixtures, and décor illustrated are conceptual and may vary upon completion. The Developer, River North Property Owner LLC, is a licensee of ALTA Development LLC who is not the Developer. © 2023 with all rights reserved River North Property Owner LLC.

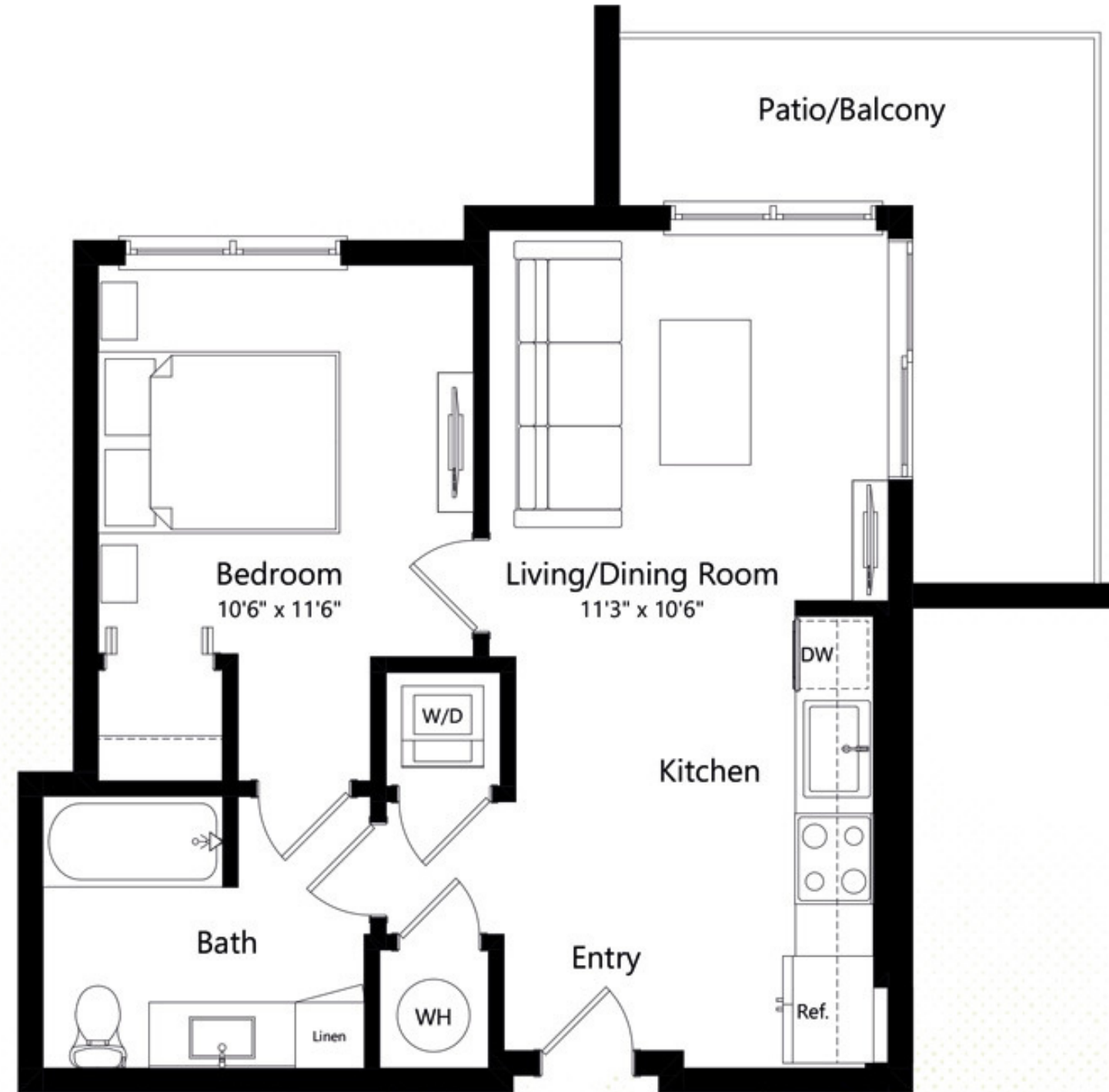


D1A

1 BEDROOM 1 BATH

14

RIVER DISTRICT
MIAMI



INTERIOR
600 | 56

EXTERIOR
115 | 11

SQ FT | M

The dimensions stated for this unit floor plan are approximate because there are various recognized methods for calculating the square footage of a unit. The square footage stated here is calculated from the exterior boundaries of the exterior walls to the centerline of interior demising walls without deductions for cutouts, curves, or architectural features. This method typically results in quoted dimensions greater than the dimensions that would be determined by using other accepted methods. The definition of "Unit" and the calculation method to be relied upon is set forth in the Developer's Prospectus. The illustrations and images are conceptual and may vary from concept to actual construction. The floor plan, unit layout, locations of windows, doors, closets, plumbing fixtures, mechanical equipment, appliances, structural elements, architectural design elements, and the uses, configurations, and entries to rooms may change with based on final approved plans, permitting, and construction. The furniture plan and the uses of space illustrated are suggested uses only and not intended to guaranty any specific use of space. Furnishings, design features, fixtures, and décor illustrated are conceptual and may vary upon completion. The Developer, River North Property Owner LLC, is a licensee of ALTA Development LLC who is not the Developer. © 2023 with all rights reserved River North Property Owner LLC.

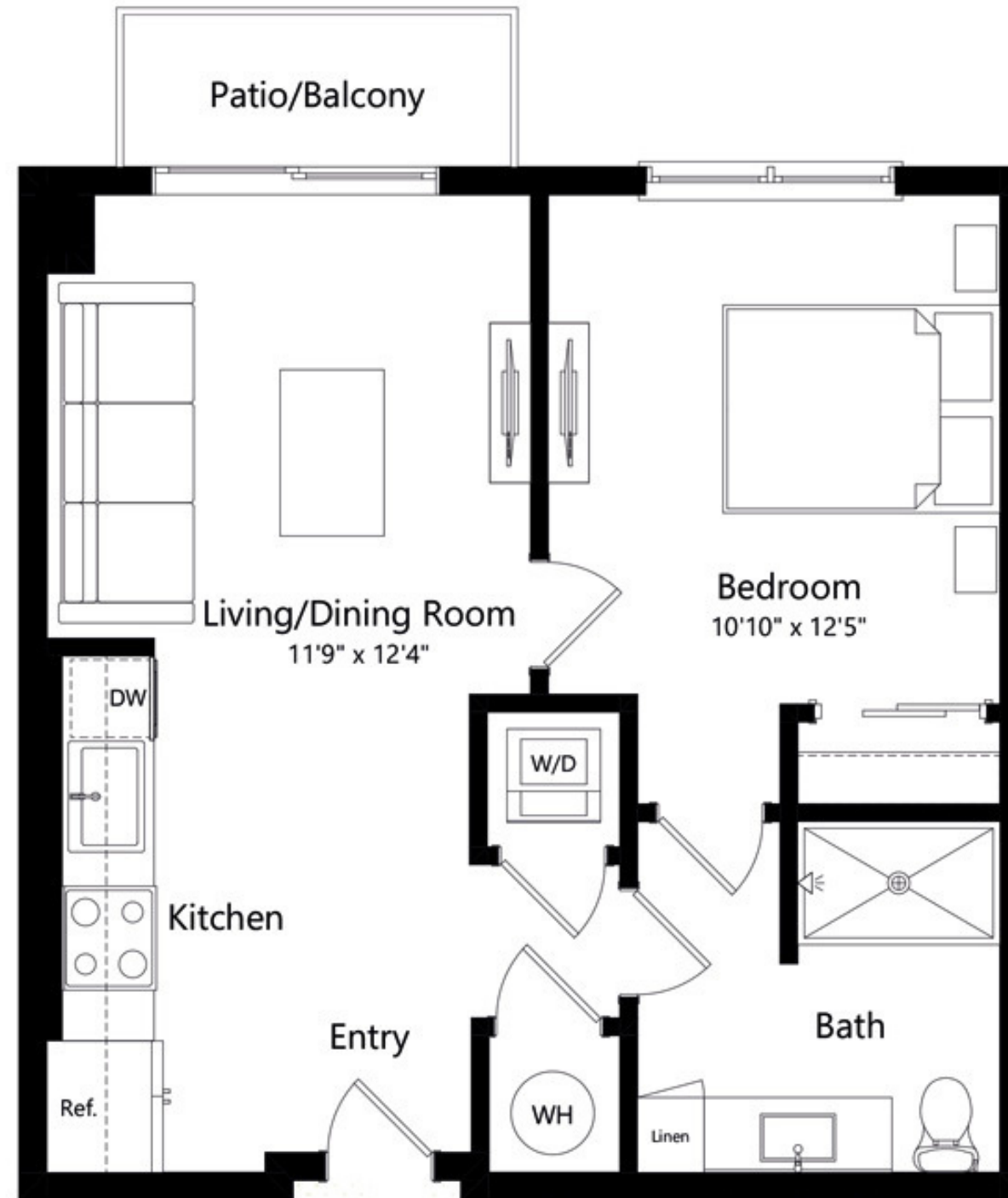


D2

1 BEDROOM 1 BATH

14

RIVER DISTRICT
MIAMI



INTERIOR
560 | 52

EXTERIOR
40 | 4

SQ FT | M

The dimensions stated for this unit floor plan are approximate because there are various recognized methods for calculating the square footage of a unit. The square footage stated here is calculated from the exterior boundaries of the exterior walls to the centerline of interior demising walls without deductions for cutouts, curves, or architectural features. This method typically results in quoted dimensions greater than the dimensions that would be determined by using other accepted methods. The definition of "Unit" and the calculation method to be relied upon is set forth in the Developer's Prospectus. The illustrations and images are conceptual and may vary from concept to actual construction. The floor plan, unit layout, locations of windows, doors, closets, plumbing fixtures, mechanical equipment, appliances, structural elements, architectural design elements, and the uses, configurations, and entries to rooms may change with based on final approved plans, permitting, and construction. The furniture plan and the uses of space illustrated are suggested uses only and not intended to guaranty any specific use of space. Furnishings, design features, fixtures, and décor illustrated are conceptual and may vary upon completion. The Developer, River North Property Owner LLC, is a licensee of ALTA Development LLC who is not the Developer. © 2023 with all rights reserved River North Property Owner LLC.



D2A

1 BEDROOM 1 BATH

14

RIVER DISTRICT
MIAMI



INTERIOR
570 | 53

EXTERIOR
40 | 4

SQ FT | M

The dimensions stated for this unit floor plan are approximate because there are various recognized methods for calculating the square footage of a unit. The square footage stated here is calculated from the exterior boundaries of the exterior walls to the centerline of interior demising walls without deductions for cutouts, curves, or architectural features. This method typically results in quoted dimensions greater than the dimensions that would be determined by using other accepted methods. The definition of "Unit" and the calculation method to be relied upon is set forth in the Developer's Prospectus. The illustrations and images are conceptual and may vary from concept to actual construction. The floor plan, unit layout, locations of windows, doors, closets, plumbing fixtures, mechanical equipment, appliances, structural elements, architectural design elements, and the uses, configurations, and entries to rooms may change with based on final approved plans, permitting, and construction. The furniture plan and the uses of space illustrated are suggested uses only and not intended to guaranty any specific use of space. Furnishings, design features, fixtures, and décor illustrated are conceptual and may vary upon completion. The Developer, River North Property Owner LLC, is a licensee of ALTA Development LLC who is not the Developer. © 2023 with all rights reserved River North Property Owner LLC.

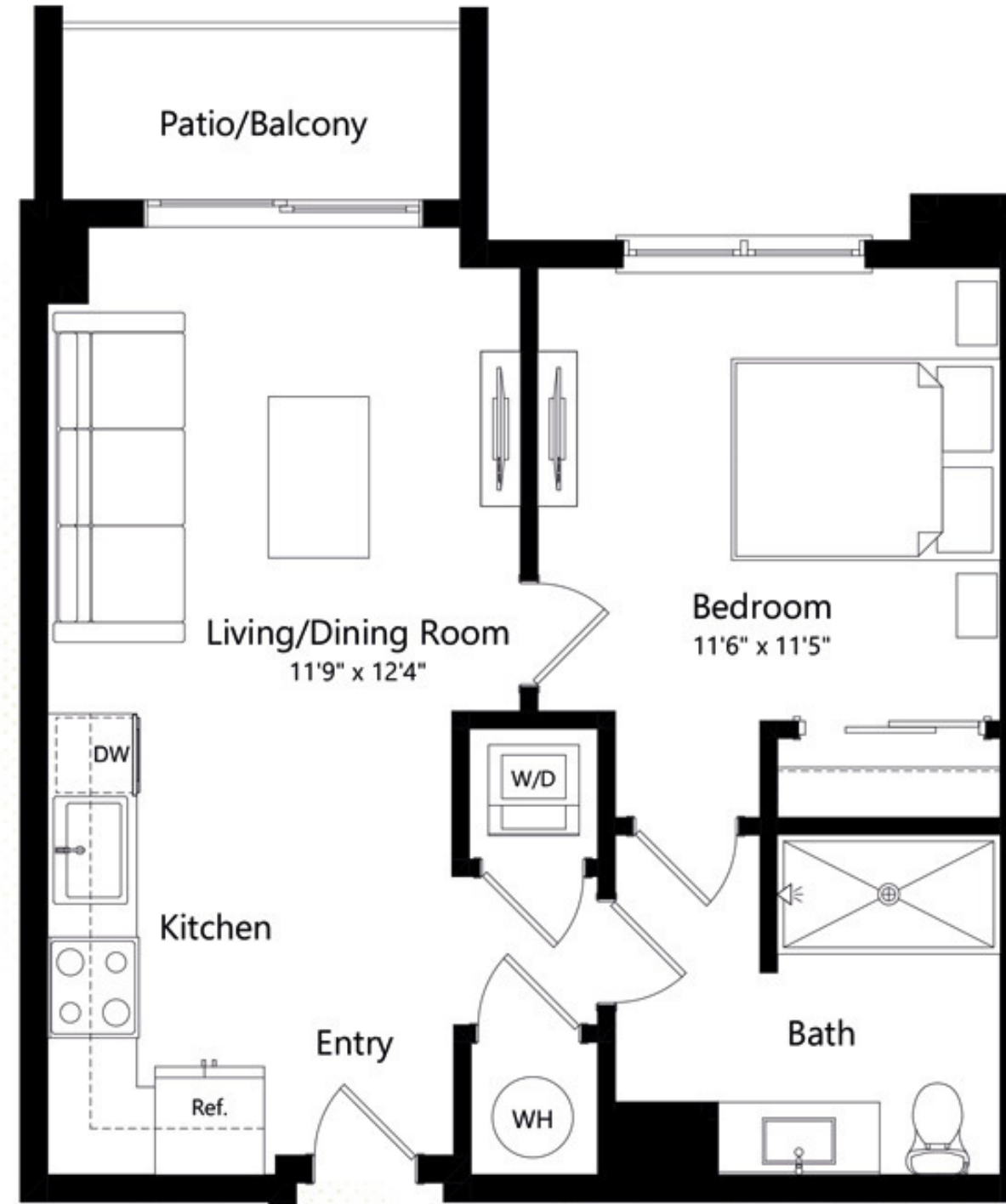


D2B

1 BEDROOM 1 BATH

14

RIVER DISTRICT
MIAMI



INTERIOR
570 | 53

EXTERIOR
40 | 4

SQ FT | M

The dimensions stated for this unit floor plan are approximate because there are various recognized methods for calculating the square footage of a unit. The square footage stated here is calculated from the exterior boundaries of the exterior walls to the centerline of interior demising walls without deductions for cutouts, curves, or architectural features. This method typically results in quoted dimensions greater than the dimensions that would be determined by using other accepted methods. The definition of "Unit" and the calculation method to be relied upon is set forth in the Developer's Prospectus. The illustrations and images are conceptual and may vary from concept to actual construction. The floor plan, unit layout, locations of windows, doors, closets, plumbing fixtures, mechanical equipment, appliances, structural elements, architectural design elements, and the uses, configurations, and entries to rooms may change with based on final approved plans, permitting, and construction. The furniture plan and the uses of space illustrated are suggested uses only and not intended to guaranty any specific use of space. Furnishings, design features, fixtures, and décor illustrated are conceptual and may vary upon completion. The Developer, River North Property Owner LLC, is a licensee of ALTA Development LLC who is not the Developer. © 2023 with all rights reserved River North Property Owner LLC.

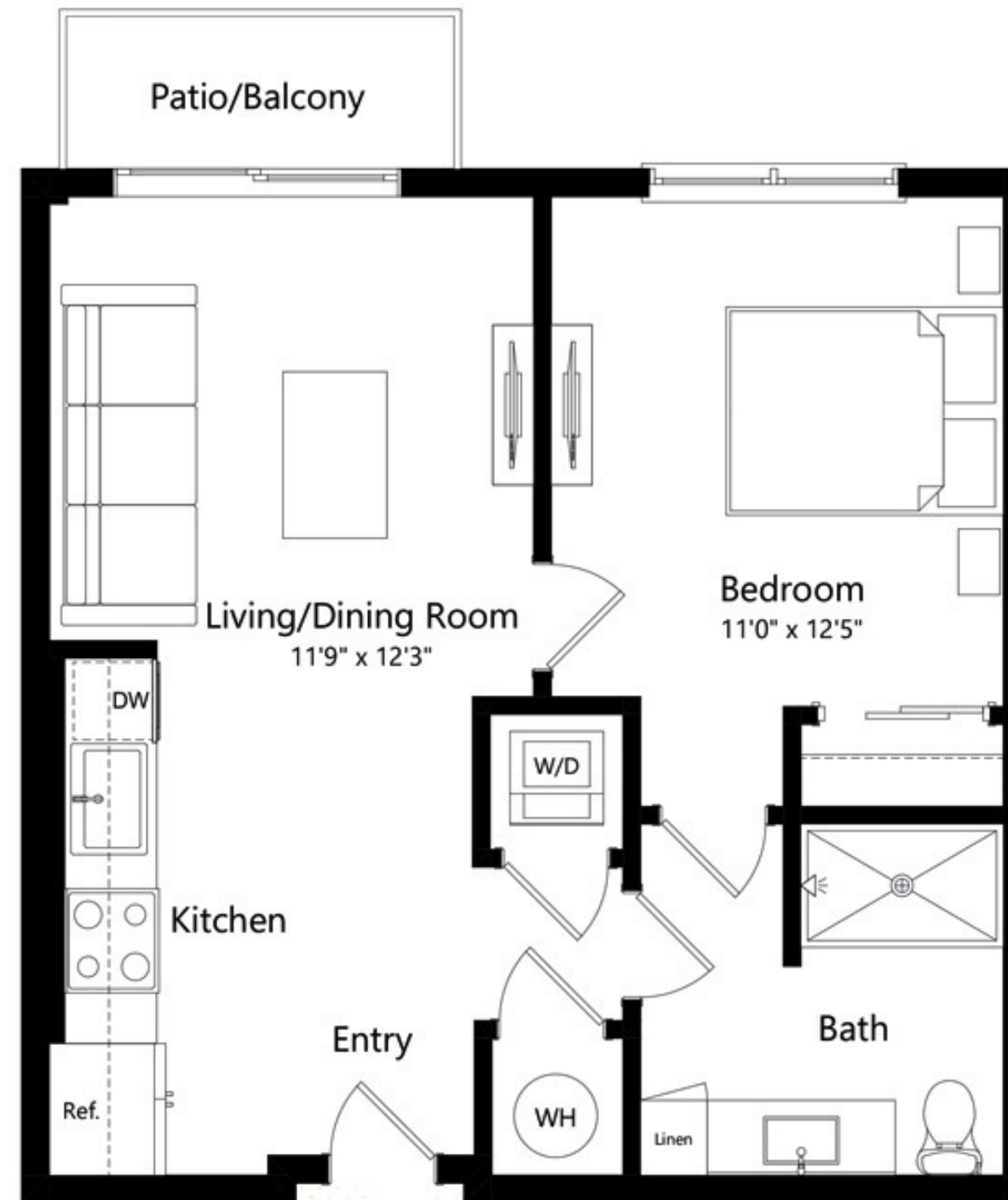


D3

1 BEDROOM 1 BATH

14

RIVER DISTRICT
MIAMI



INTERIOR
580 | 54

EXTERIOR
40 | 4

SQ FT | M

The dimensions stated for this unit floor plan are approximate because there are various recognized methods for calculating the square footage of a unit. The square footage stated here is calculated from the exterior boundaries of the exterior walls to the centerline of interior demising walls without deductions for cutouts, curves, or architectural features. This method typically results in quoted dimensions greater than the dimensions that would be determined by using other accepted methods. The definition of "Unit" and the calculation method to be relied upon is set forth in the Developer's Prospectus. The illustrations and images are conceptual and may vary from concept to actual construction. The floor plan, unit layout, locations of windows, doors, closets, plumbing fixtures, mechanical equipment, appliances, structural elements, architectural design elements, and the uses, configurations, and entries to rooms may change with based on final approved plans, permitting, and construction. The furniture plan and the uses of space illustrated are suggested uses only and not intended to guaranty any specific use of space. Furnishings, design features, fixtures, and décor illustrated are conceptual and may vary upon completion. The Developer, River North Property Owner LLC, is a licensee of ALTA Development LLC who is not the Developer. © 2023 with all rights reserved River North Property Owner LLC.

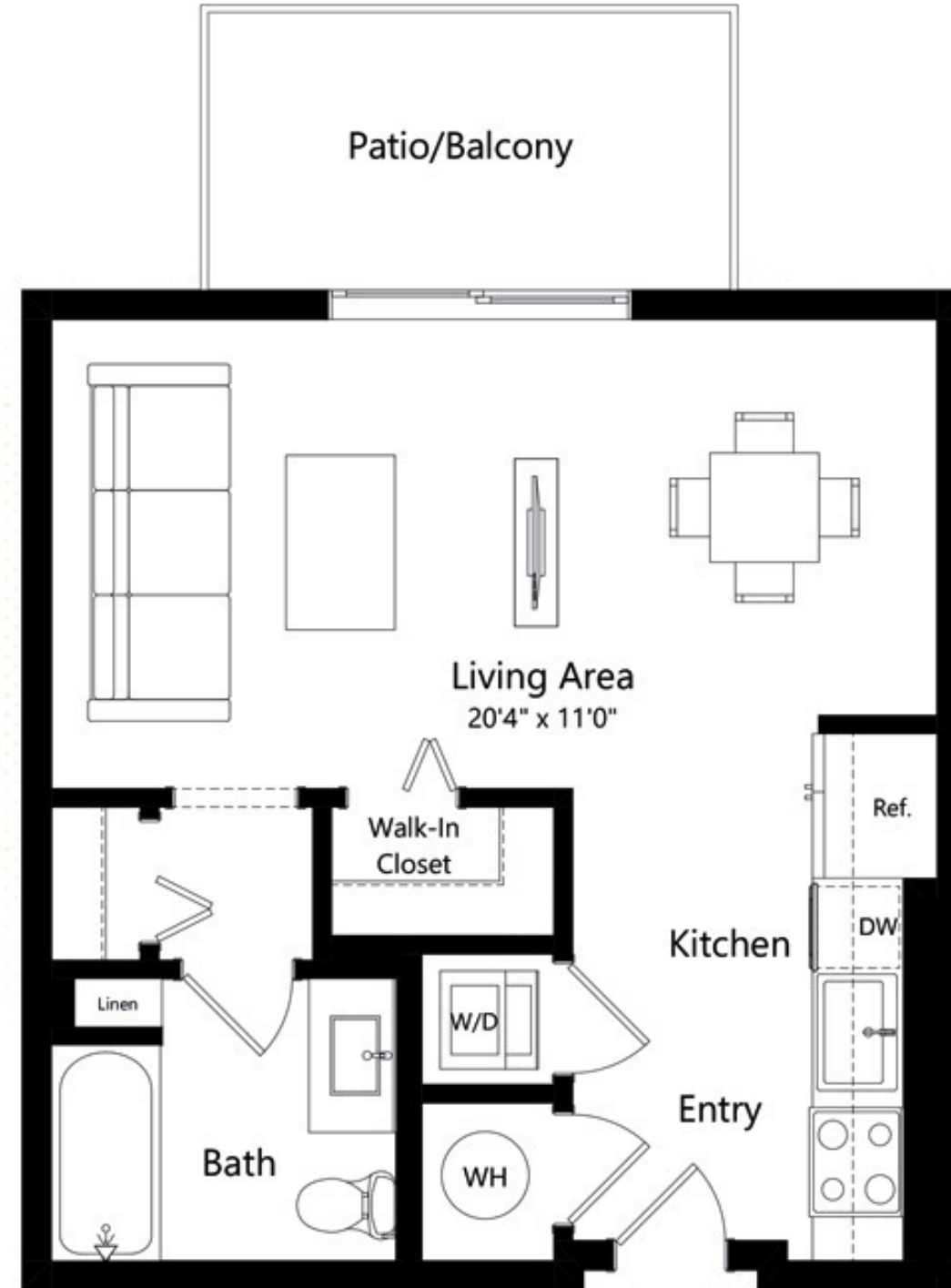


E1

STUDIO 1 BATH

14

RIVER DISTRICT
MIAMI



INTERIOR
520 | 48

EXTERIOR
77 | 7

SQ FT | M

The dimensions stated for this unit floor plan are approximate because there are various recognized methods for calculating the square footage of a unit. The square footage stated here is calculated from the exterior boundaries of the exterior walls to the centerline of interior demising walls without deductions for cutouts, curves, or architectural features. This method typically results in quoted dimensions greater than the dimensions that would be determined by using other accepted methods. The definition of "Unit" and the calculation method to be relied upon is set forth in the Developer's Prospectus. The illustrations and images are conceptual and may vary from concept to actual construction. The floor plan, unit layout, locations of windows, doors, closets, plumbing fixtures, mechanical equipment, appliances, structural elements, architectural design elements, and the uses, configurations, and entries to rooms may change with based on final approved plans, permitting, and construction. The furniture plan and the uses of space illustrated are suggested uses only and not intended to guaranty any specific use of space. Furnishings, design features, fixtures, and décor illustrated are conceptual and may vary upon completion. The Developer, River North Property Owner LLC, is a licensee of ALTA Development LLC who is not the Developer. © 2023 with all rights reserved River North Property Owner LLC.



F1

2 BEDROOM 2 BATH

14

RIVER DISTRICT
MIAMI



INTERIOR
1080 | 100
SQ FT | M

The dimensions stated for this unit floor plan are approximate because there are various recognized methods for calculating the square footage of a unit. The square footage stated here is calculated from the exterior boundaries of the exterior walls to the centerline of interior demising walls without deductions for cutouts, curves, or architectural features. This method typically results in quoted dimensions greater than the dimensions that would be determined by using other accepted methods. The definition of "Unit" and the calculation method to be relied upon is set forth in the Developer's Prospectus. The illustrations and images are conceptual and may vary from concept to actual construction. The floor plan, unit layout, locations of windows, doors, closets, plumbing fixtures, mechanical equipment, appliances, structural elements, architectural design elements, and the uses, configurations, and entries to rooms may change with based on final approved plans, permitting, and construction. The furniture plan and the uses of space illustrated are suggested uses only and not intended to guaranty any specific use of space. Furnishings, design features, fixtures, and décor illustrated are conceptual and may vary upon completion. The Developer, River North Property Owner LLC, is a licensee of ALTA Development LLC who is not the Developer. © 2023 with all rights reserved River North Property Owner LLC.

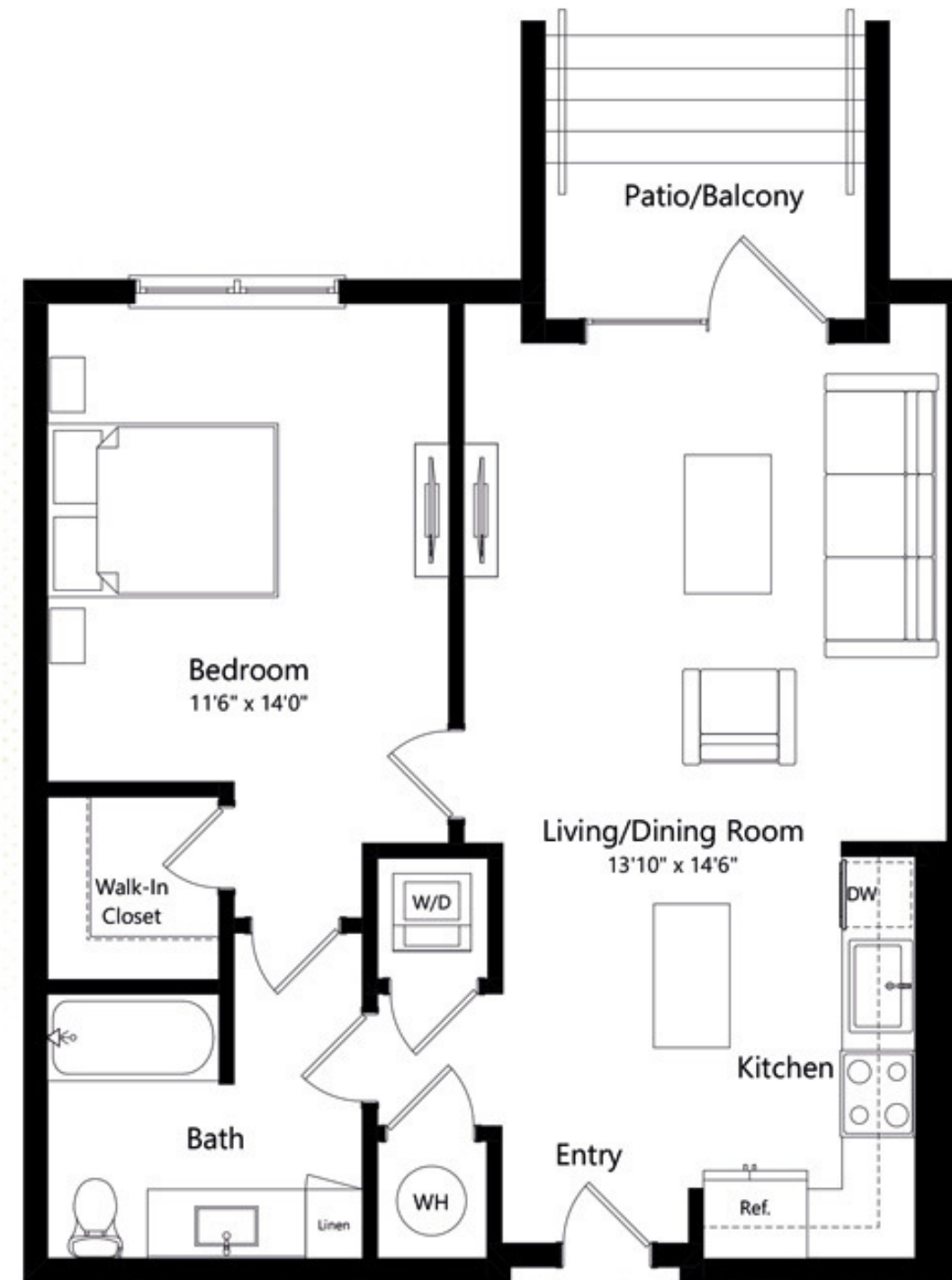


F2

1 BEDROOM 1 BATH

14

RIVER DISTRICT
MIAMI



INTERIOR
740 | 69
SQ FT | M

The dimensions stated for this unit floor plan are approximate because there are various recognized methods for calculating the square footage of a unit. The square footage stated here is calculated from the exterior boundaries of the exterior walls to the centerline of interior demising walls without deductions for cutouts, curves, or architectural features. This method typically results in quoted dimensions greater than the dimensions that would be determined by using other accepted methods. The definition of "Unit" and the calculation method to be relied upon is set forth in the Developer's Prospectus. The illustrations and images are conceptual and may vary from concept to actual construction. The floor plan, unit layout, locations of windows, doors, closets, plumbing fixtures, mechanical equipment, appliances, structural elements, architectural design elements, and the uses, configurations, and entries to rooms may change with based on final approved plans, permitting, and construction. The furniture plan and the uses of space illustrated are suggested uses only and not intended to guaranty any specific use of space. Furnishings, design features, fixtures, and décor illustrated are conceptual and may vary upon completion. The Developer, River North Property Owner LLC, is a licensee of ALTA Development LLC who is not the Developer. © 2023 with all rights reserved River North Property Owner LLC.

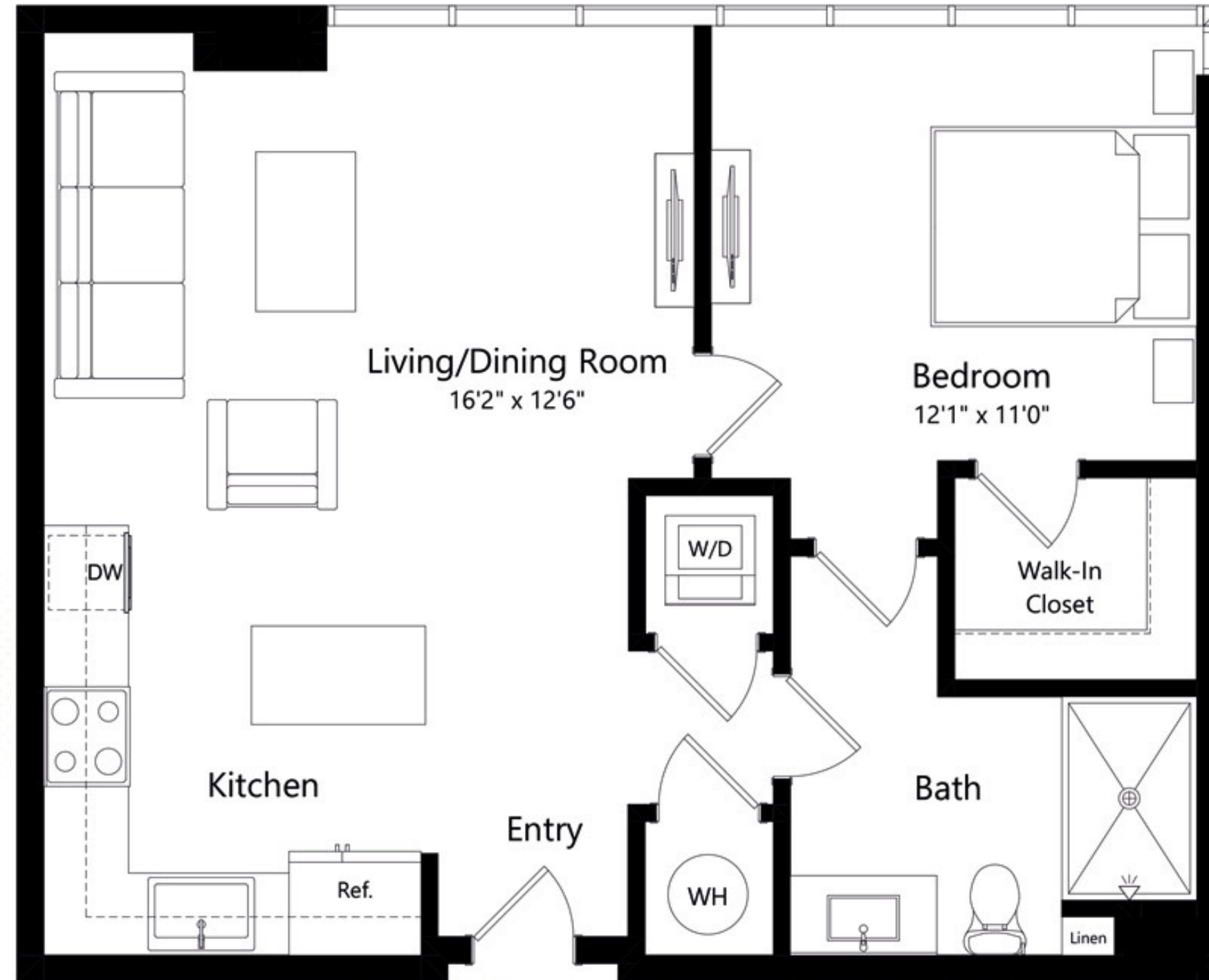


F3

1 BEDROOM 1 BATH

14

RIVER DISTRICT
MIAMI



INTERIOR
700 | 65
SQ FT | M

The dimensions stated for this unit floor plan are approximate because there are various recognized methods for calculating the square footage of a unit. The square footage stated here is calculated from the exterior boundaries of the exterior walls to the centerline of interior demising walls without deductions for cutouts, curves, or architectural features. This method typically results in quoted dimensions greater than the dimensions that would be determined by using other accepted methods. The definition of "Unit" and the calculation method to be relied upon is set forth in the Developer's Prospectus. The illustrations and images are conceptual and may vary from concept to actual construction. The floor plan, unit layout, locations of windows, doors, closets, plumbing fixtures, mechanical equipment, appliances, structural elements, architectural design elements, and the uses, configurations, and entries to rooms may change with based on final approved plans, permitting, and construction. The furniture plan and the uses of space illustrated are suggested uses only and not intended to guaranty any specific use of space. Furnishings, design features, fixtures, and décor illustrated are conceptual and may vary upon completion. The Developer, River North Property Owner LLC, is a licensee of ALTA Development LLC who is not the Developer. © 2023 with all rights reserved River North Property Owner LLC.

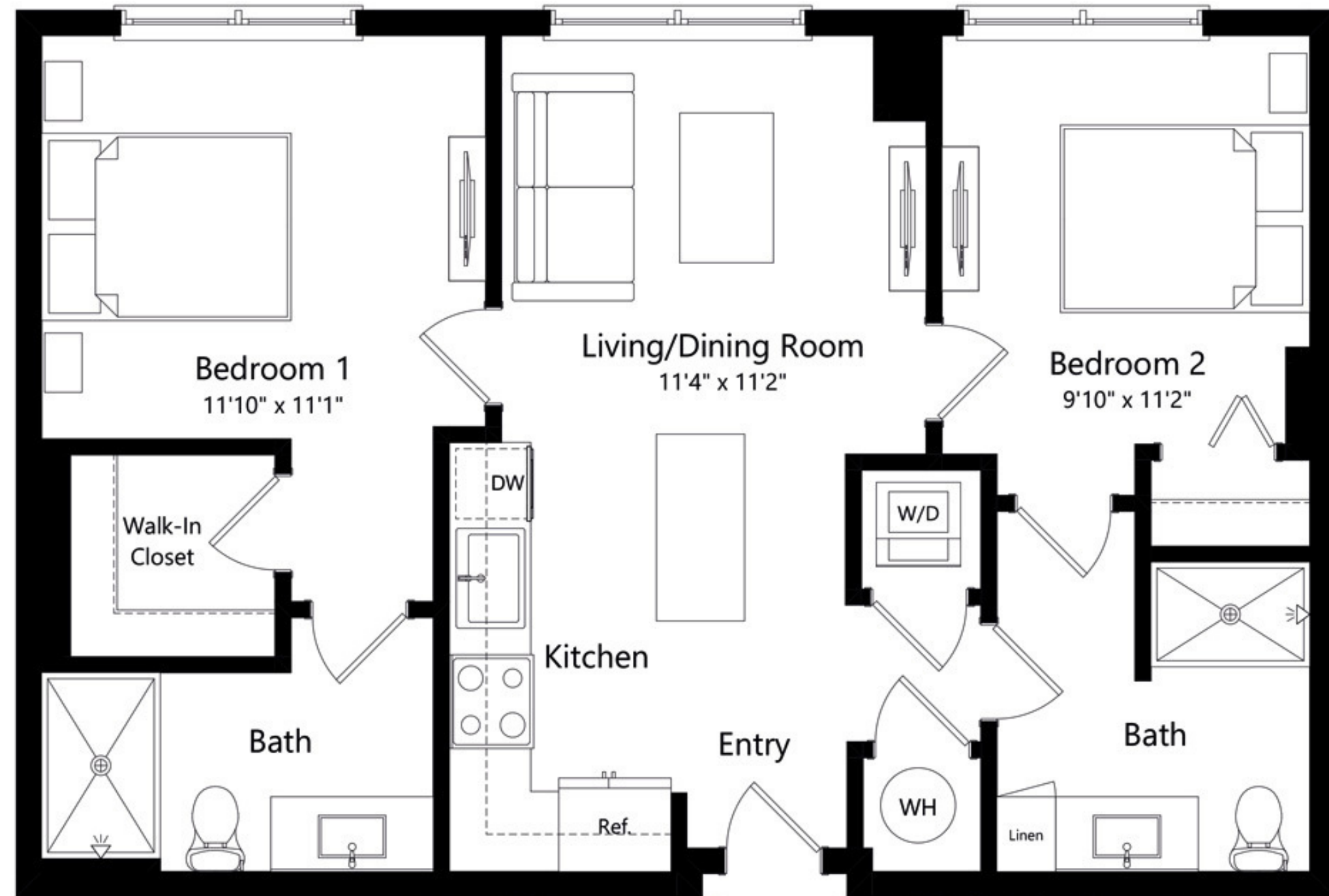


F4

2 BEDROOM 2 BATH

14

RIVER DISTRICT
MIAMI



INTERIOR
880 | 82

SQ FT | M

The dimensions stated for this unit floor plan are approximate because there are various recognized methods for calculating the square footage of a unit. The square footage stated here is calculated from the exterior boundaries of the exterior walls to the centerline of interior demising walls without deductions for cutouts, curves, or architectural features. This method typically results in quoted dimensions greater than the dimensions that would be determined by using other accepted methods. The definition of "Unit" and the calculation method to be relied upon is set forth in the Developer's Prospectus. The illustrations and images are conceptual and may vary from concept to actual construction. The floor plan, unit layout, locations of windows, doors, closets, plumbing fixtures, mechanical equipment, appliances, structural elements, architectural design elements, and the uses, configurations, and entries to rooms may change with based on final approved plans, permitting, and construction. The furniture plan and the uses of space illustrated are suggested uses only and not intended to guaranty any specific use of space. Furnishings, design features, fixtures, and décor illustrated are conceptual and may vary upon completion. The Developer, River North Property Owner LLC, is a licensee of ALTA Development LLC who is not the Developer. © 2023 with all rights reserved River North Property Owner LLC.

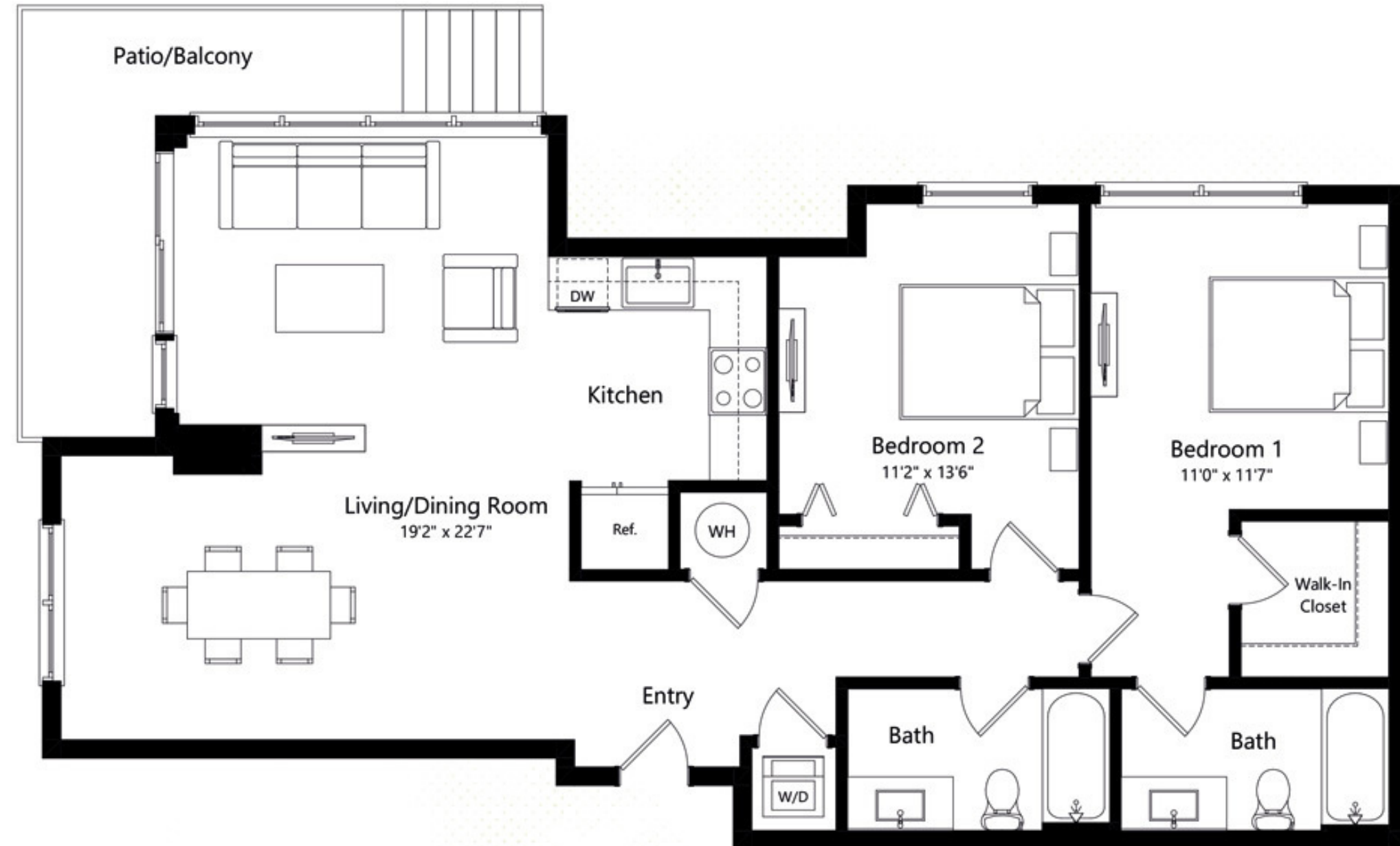


F5

2 BEDROOM 2 BATH

14

RIVER DISTRICT
MIAMI



INTERIOR
1130 | 105

SQ FT | M

The dimensions stated for this unit floor plan are approximate because there are various recognized methods for calculating the square footage of a unit. The square footage stated here is calculated from the exterior boundaries of the exterior walls to the centerline of interior demising walls without deductions for cutouts, curves, or architectural features. This method typically results in quoted dimensions greater than the dimensions that would be determined by using other accepted methods. The definition of "Unit" and the calculation method to be relied upon is set forth in the Developer's Prospectus. The illustrations and images are conceptual and may vary from concept to actual construction. The floor plan, unit layout, locations of windows, doors, closets, plumbing fixtures, mechanical equipment, appliances, structural elements, architectural design elements, and the uses, configurations, and entries to rooms may change with based on final approved plans, permitting, and construction. The furniture plan and the uses of space illustrated are suggested uses only and not intended to guaranty any specific use of space. Furnishings, design features, fixtures, and décor illustrated are conceptual and may vary upon completion. The Developer, River North Property Owner LLC, is a licensee of ALTA Development LLC who is not the Developer. © 2023 with all rights reserved River North Property Owner LLC.



F6

2 BEDROOM 2 BATH

14

RIVER DISTRICT
MIAMI



INTERIOR
880 | 82
SQ FT | M

The dimensions stated for this unit floor plan are approximate because there are various recognized methods for calculating the square footage of a unit. The square footage stated here is calculated from the exterior boundaries of the exterior walls to the centerline of interior demising walls without deductions for cutouts, curves, or architectural features. This method typically results in quoted dimensions greater than the dimensions that would be determined by using other accepted methods. The definition of "Unit" and the calculation method to be relied upon is set forth in the Developer's Prospectus. The illustrations and images are conceptual and may vary from concept to actual construction. The floor plan, unit layout, locations of windows, doors, closets, plumbing fixtures, mechanical equipment, appliances, structural elements, architectural design elements, and the uses, configurations, and entries to rooms may change with based on final approved plans, permitting, and construction. The furniture plan and the uses of space illustrated are suggested uses only and not intended to guaranty any specific use of space. Furnishings, design features, fixtures, and décor illustrated are conceptual and may vary upon completion. The Developer, River North Property Owner LLC, is a licensee of ALTA Development LLC who is not the Developer. © 2023 with all rights reserved River North Property Owner LLC.

